



# ASSEMBLY INSTRUCTIONS

**Four Drawer Base Cabinet**

**Model Number: UG21004**

**In the event of missing or damaged parts:**

**PLEASE CALL: 949-713-3338**

***NOTE: Do Not Call Retailer - Contact Manufacturer Direct For Faster Service.***



Ulti-MATE Garage | 30021 Tomas, Rancho Santa Margarita, CA 92688.  
T: 949-713-3338 | W: [www.ulti-mategarage.com](http://www.ulti-mategarage.com)

Rev 1.01

# PARTS LIST

BASE CABINET MODEL: UG21004

In the unlikely event of missing or damaged parts  
**PLEASE CALL : 949-713-3338**

WEB: [www.ulti-mategarage.com](http://www.ulti-mategarage.com)

## TOOLS NEEDED FOR ASSEMBLY



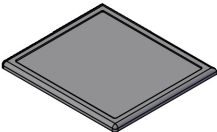
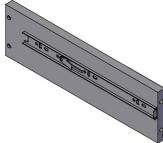
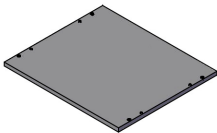
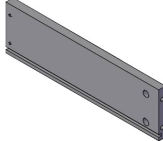
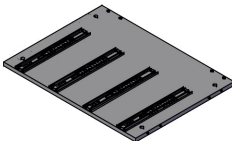
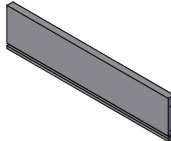
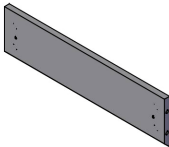
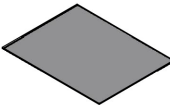
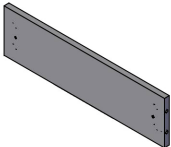
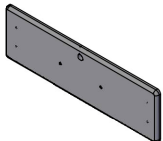
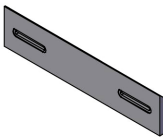
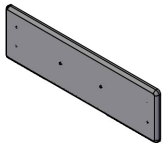
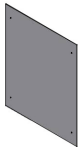
Phillips  
Screw  
Driver



Flat  
Screw  
Driver



Rubber  
Mallet

#	DESCRIPTION	QTY	IMAGE	#	DESCRIPTION	QTY	IMAGE
a	Top Work Surface	1		h	Drawer Left	4	
b	Bottom Panel	1		i	Drawer Right	4	
c	Side Panel	2		j	Drawer Back	4	
d	Top Spanner	1		k	Drawer Bottom	4	
e	Bottom Spanner	1		l	Drawer Face (top)	1	
f	Wall Cleat	1		m	Drawer Face	3	
g	Back Panel	1					

# PARTS LIST

BASE CABINET MODEL: UG21004

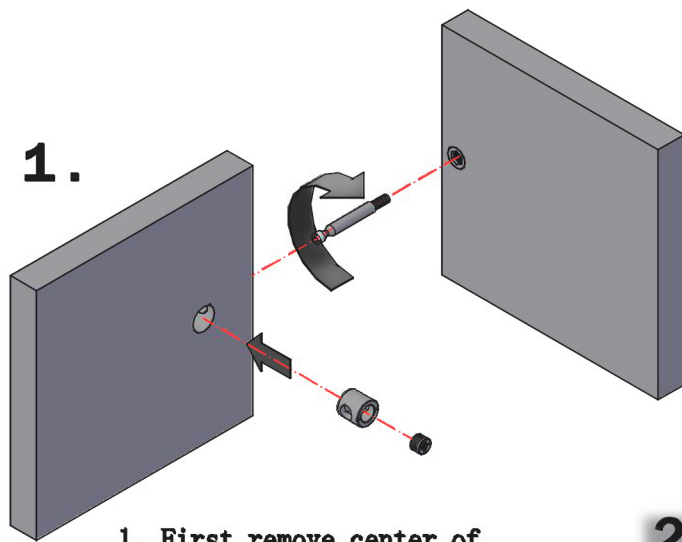
In the unlikely event of missing or damaged parts  
**PLEASE CALL : 949-713-3338**

WEB: [www.ulti-mategarage.com](http://www.ulti-mategarage.com)

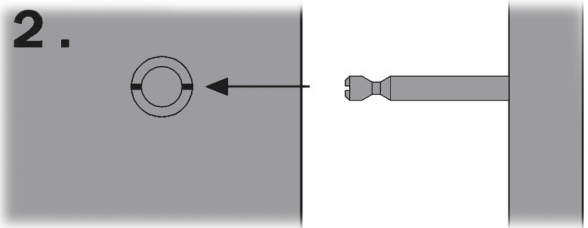
#	DESCRIPTION	QTY	IMAGE	#	DESCRIPTION	QTY	IMAGE
aa	Logo	1		ii	Wall Cleat Grommet	2	
bb	Pull	4		jj	Screw 5*15mm	4	
cc	Pull Screw 4*24mm	8		kk	Screw 4*40mm	16	
dd	Cam	32		ll	key	2	
ee	Metal Dowel	32		pp	Adjustable Foot	4	
ff	Wooden Dowel	8		ss	Touch up Crayon	1	
gg	Wall Anchor Screw 4.5*50mm	2					
hh	Wall Anchor	2					

# BEFORE YOU BEGIN

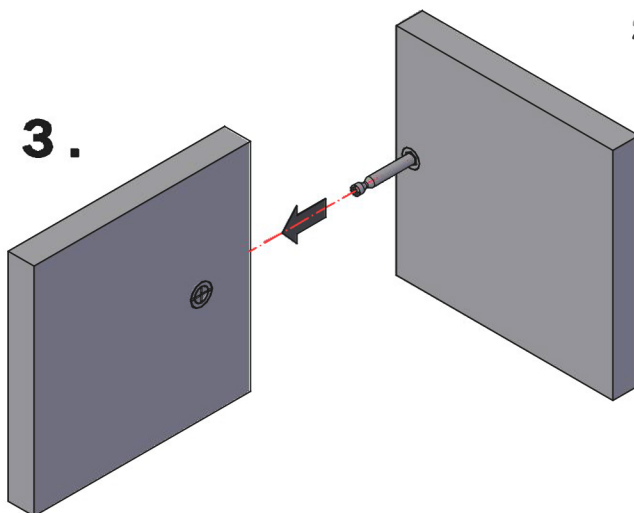
CAM STYLE FASTENERS ARE USED THROUGHOUT THE ASSEMBLY OF THIS CABINET. ASSEMBLE ALL CAMS AS SHOWN BELOW.



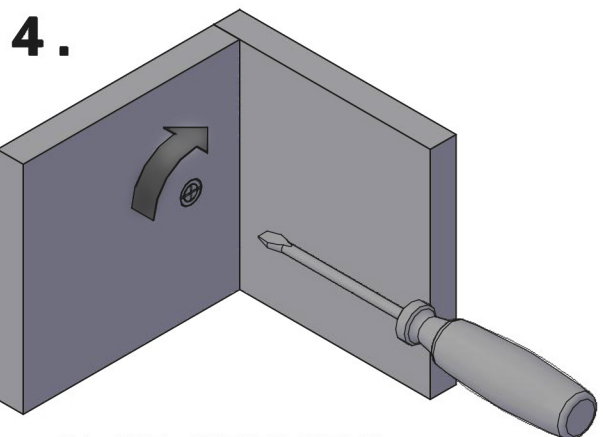
**1.** First remove center of Cam before inserting Cam outer ring into panel.



**2.** ALIGN CAM SLOT & HOLE FOR METAL DOWEL

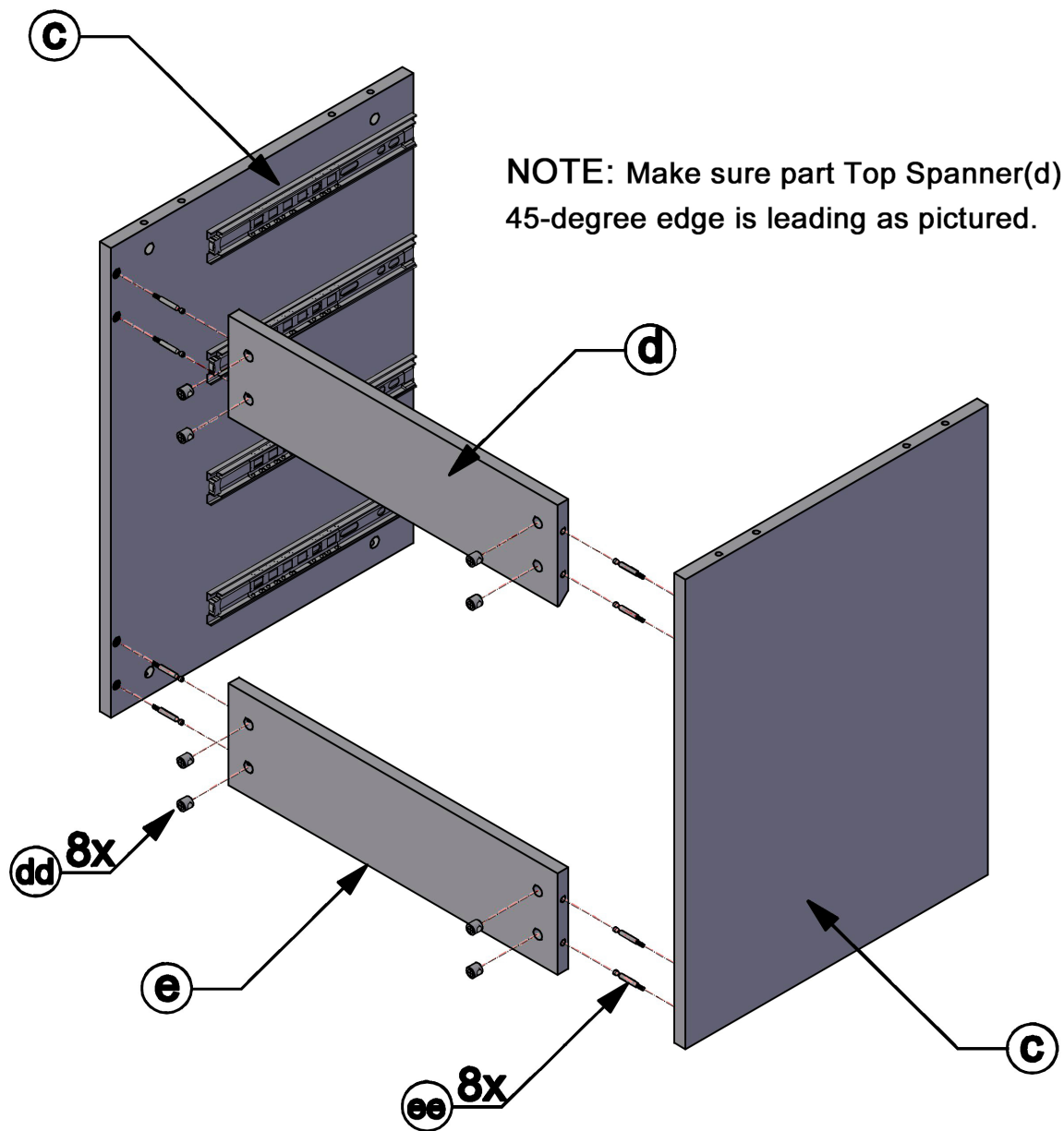


**3.** Install Metal Dowel (ee) into Cam outer ring before installing center of Cam into Cam outer ring (to prevent center of Cam blocking Dowel)

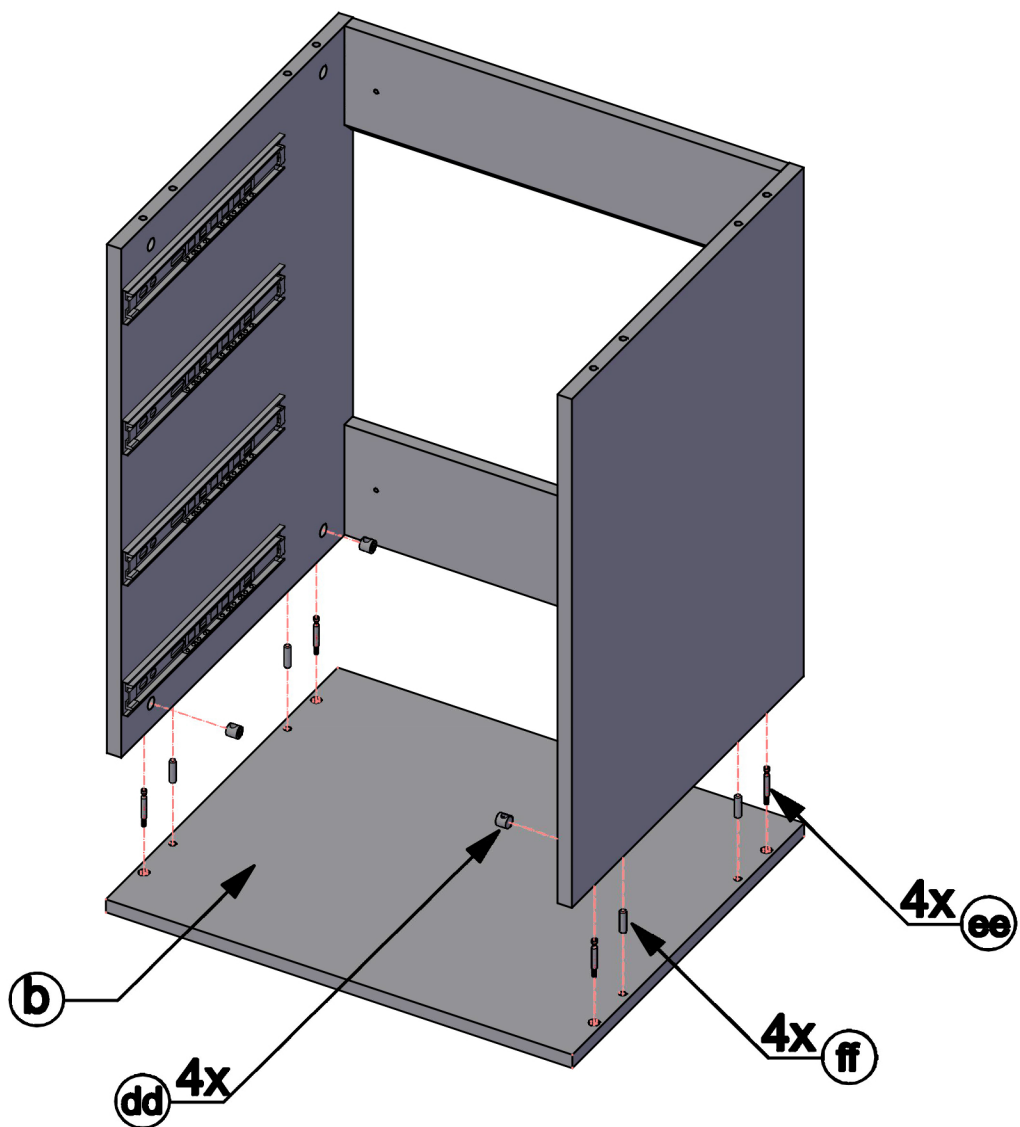


**DO NOT OVERTIGHTEN**

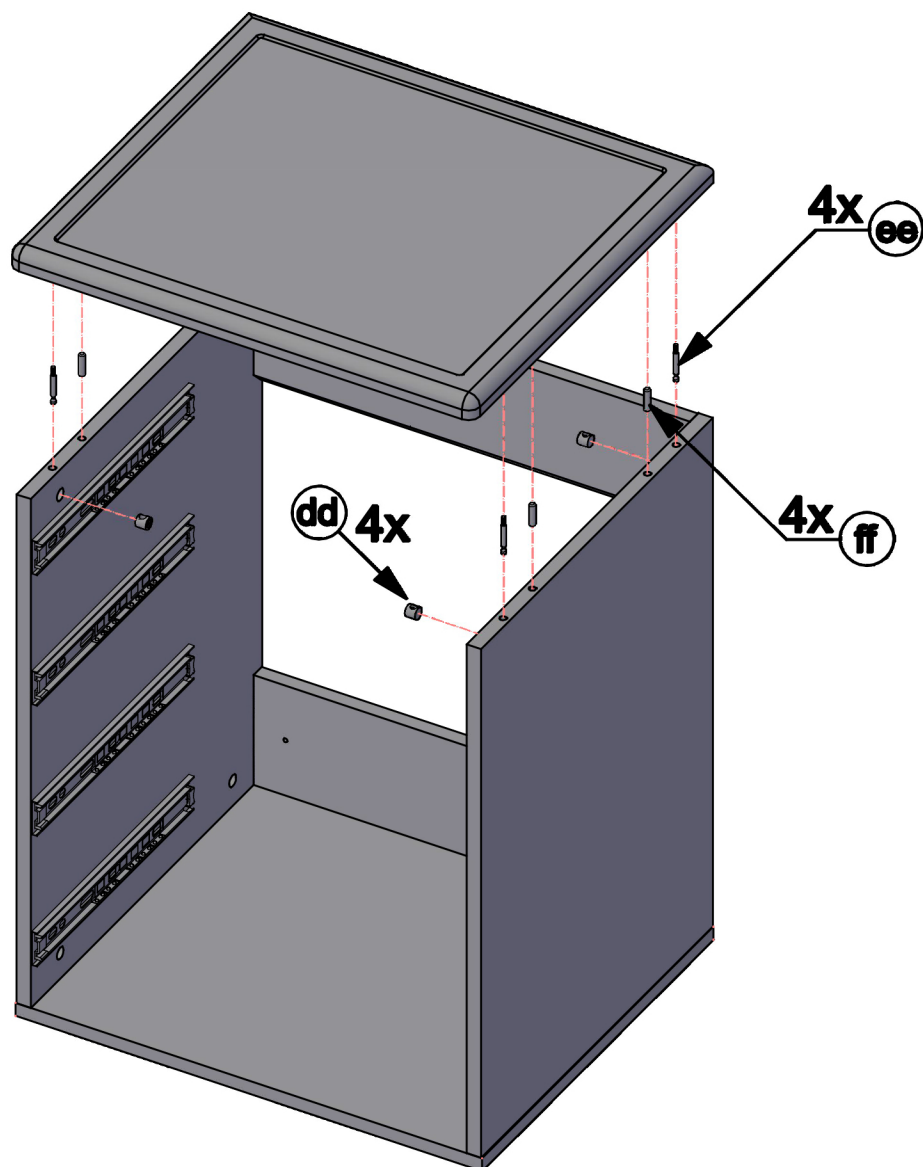
# STEP 1



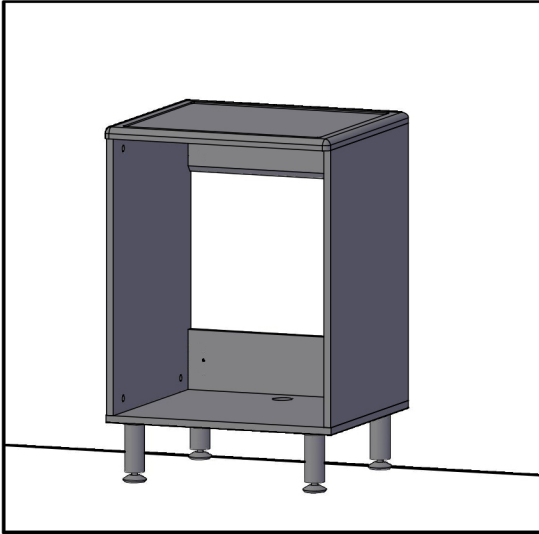
## STEP 2



## STEP 3

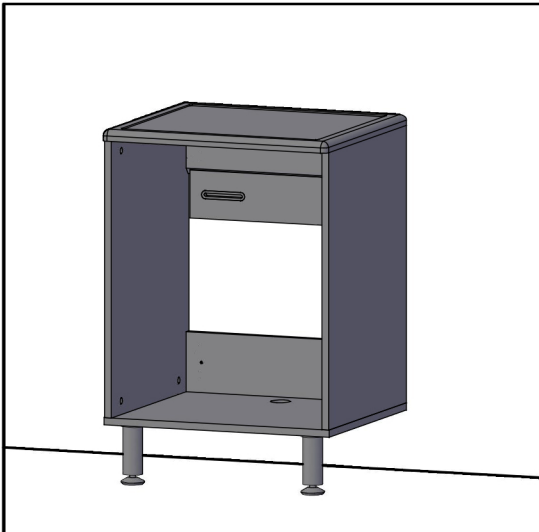


# CHOOSE AN INSTALLATION OPTION



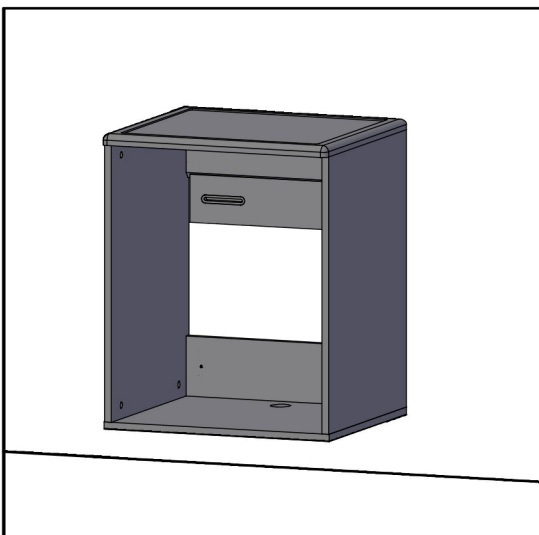
## Option 1 ( 4 Feet )

Install 4-feet(pp) and adjust feet cylinder for slightly uneven floor surfaces. Included Wall Cleat(f) used for added cabinet stability. If so, screw Wall Cleat into Wood Studs in wall, which often are 16" apart for preferred installation. Make sure to attach wall cleat level and at correct height to wall, so feet are level on ground. Contact local cabinet professional for installation labor cost when in doubt.



## Option 2 ( 2 Feet )

Install 2-front feet(pp) and use Included Wall Cleat(f). Screw wall cleat into preferred "Wood Studs" in wall, which are often 16" apart. Make sure to attach wall cleat level and at correct height to wall, so feet are level on ground. Contact local cabinet professional for installation labor cost when in doubt.

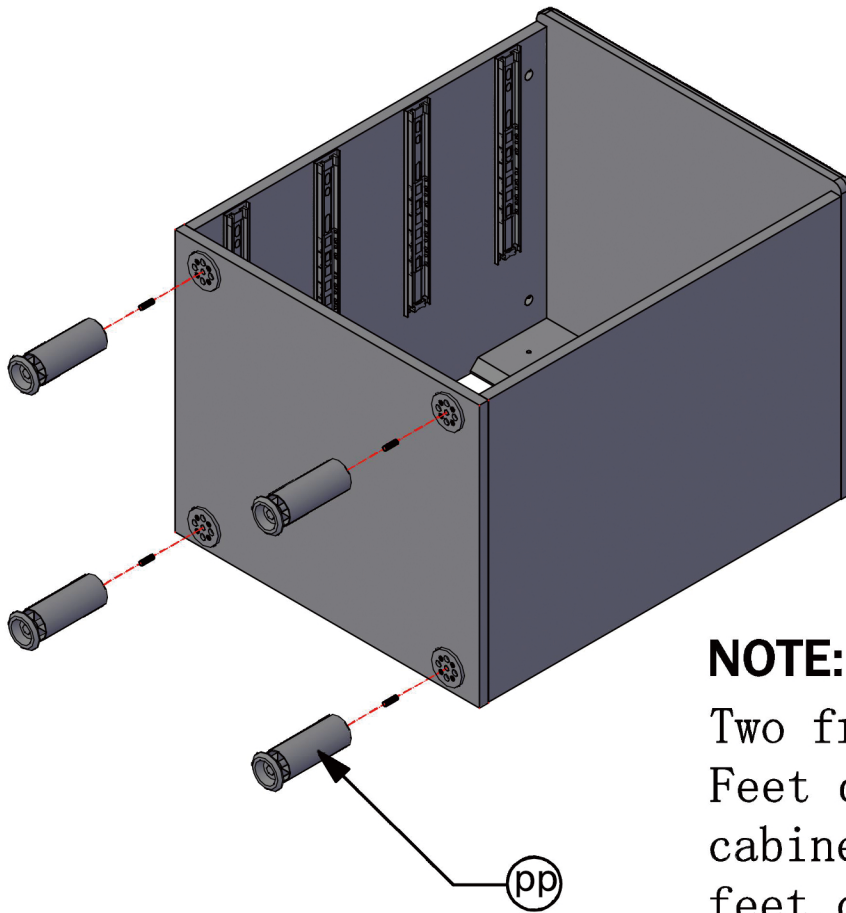


## Option 3 ( Wall Hanging )

"Cabinet Professional Installation" recommended only. Wall cleat(f) installed to Wood Studs in wall. Greatly reduce weight load in cabinet to estimated 50 lbs. Contact local cabinet professional for installation labor cost when in doubt.

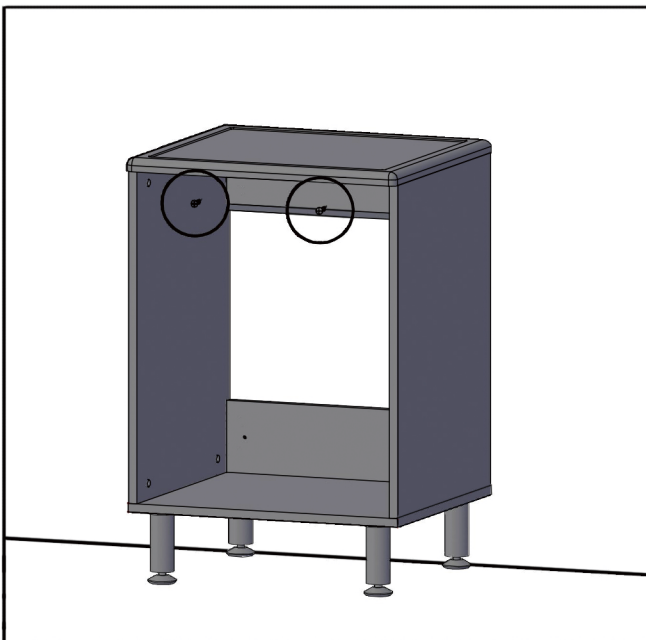
## STEP 4

### Option 1 & Option 2



#### NOTE:

Two front Feet (pp) or Four Feet can be used with your cabinet. if installing feet, do so at this time.



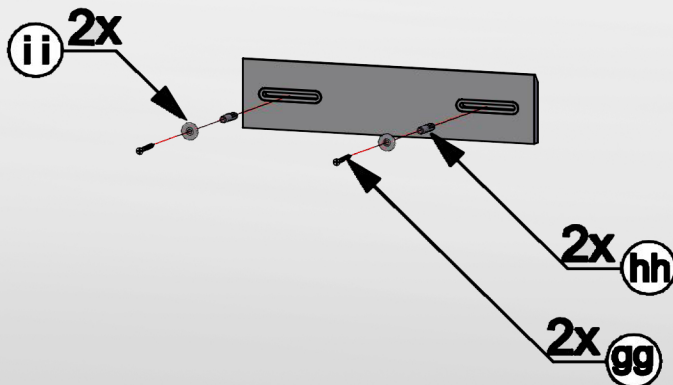
#### If Using installation Option 1

You may want to secure the finished unit onto the wall through the top spanners using wood/drywall screws for added stability. When anchoring to dry wall (with no studs), it is strongly recommended that you limit the weight in the cabinet to under 50 lbs. You may want to test the cabinet strength before loading.

## STEP 4

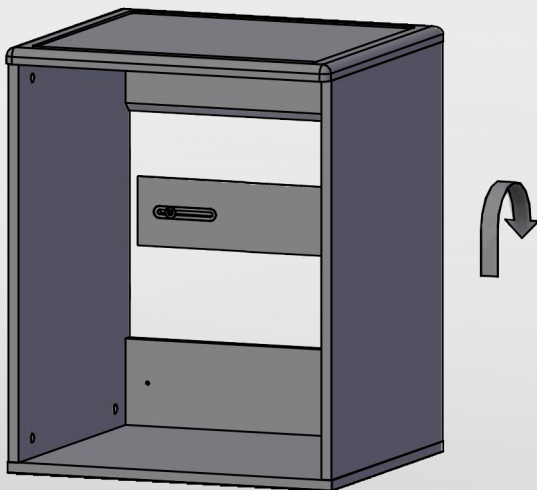
### Option 2 & Option 3

NOTE: Make sure wall Cleat(f) 45-degree angle is mounted as pictured, so to cleat to Top Spanner(d).



#### NOTE:

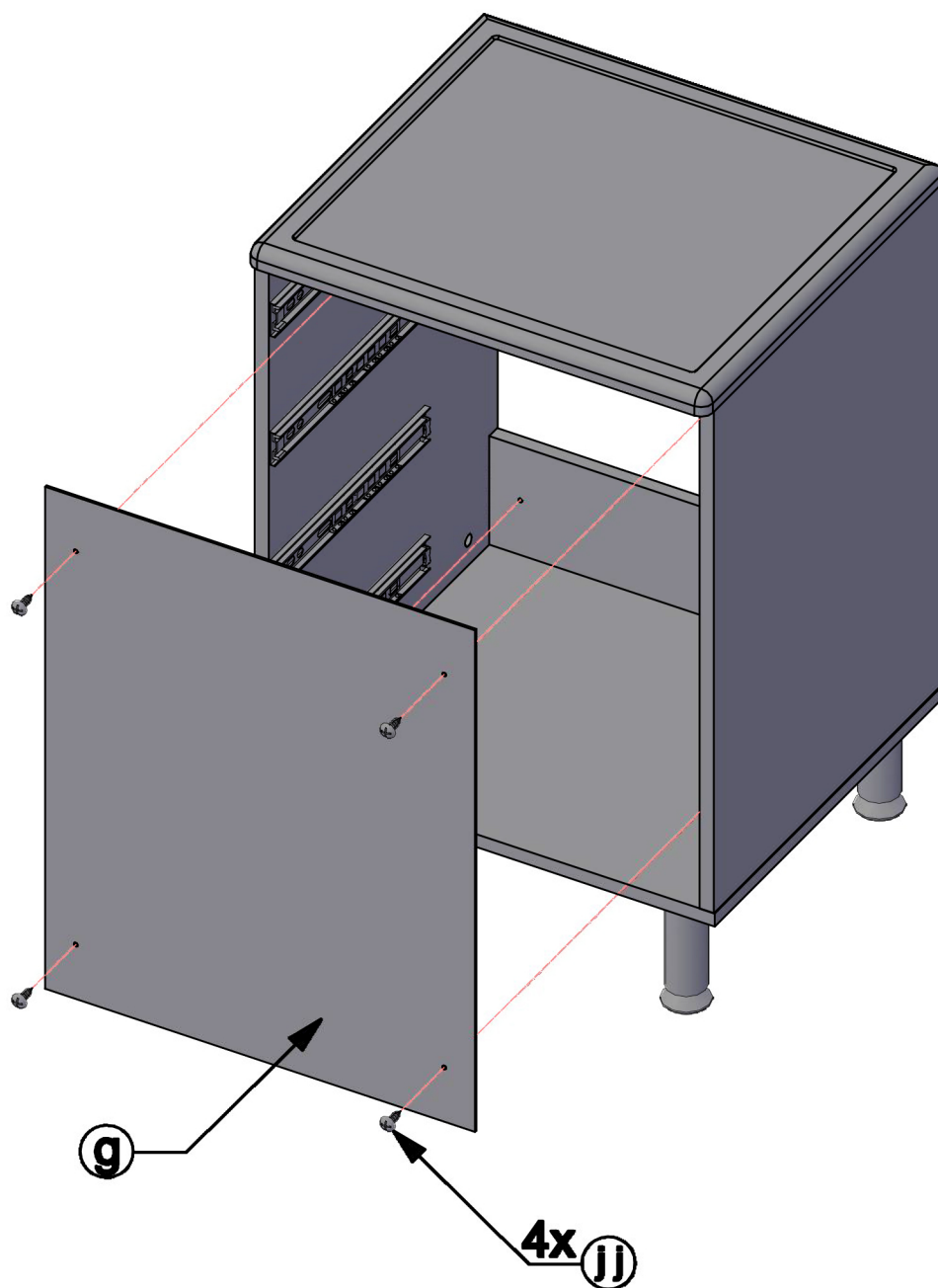
When installing wall cleat(f) to dry wall, screw directly into studs or use included **WALL ANCHOR**(hh). You may want to test the cabinet strength before loading.



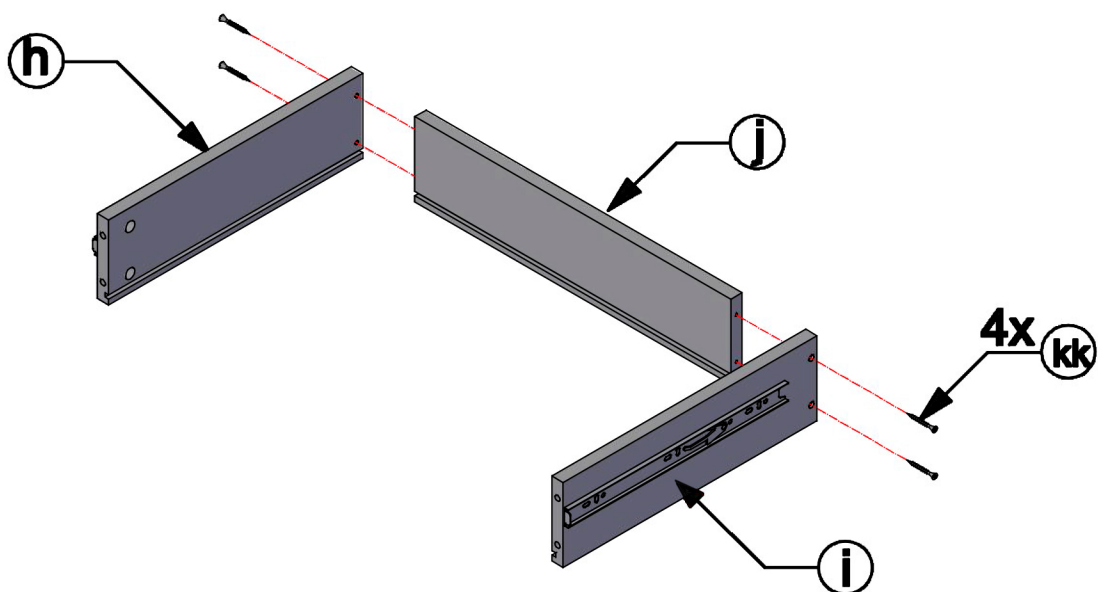
#### NOTE:

For added stability, screw two additional screws into studs through the top spanner(d) of the cabinet.

## STEP 5

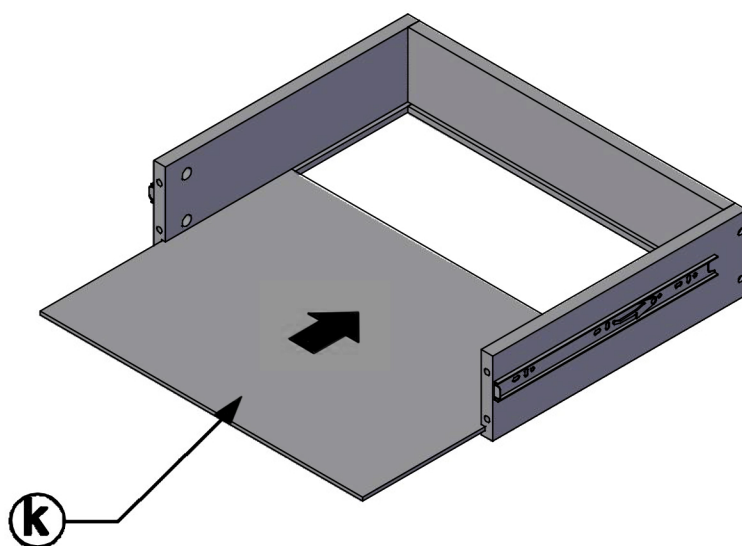


## STEP 6



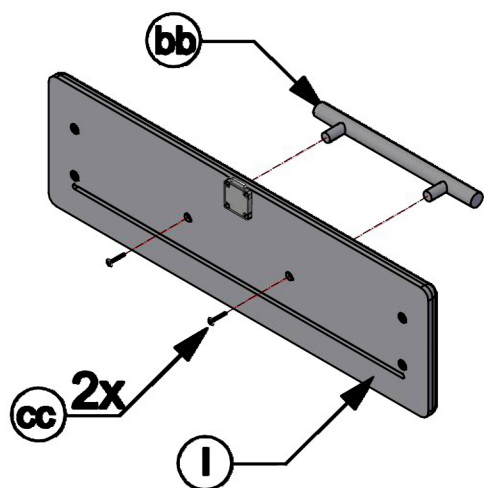
4x

## STEP 7



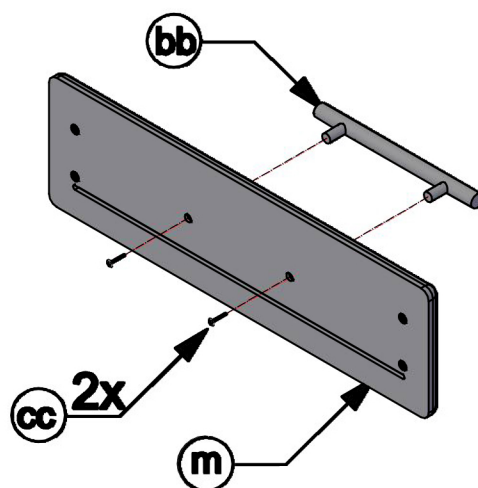
4x

## STEP 8



1x

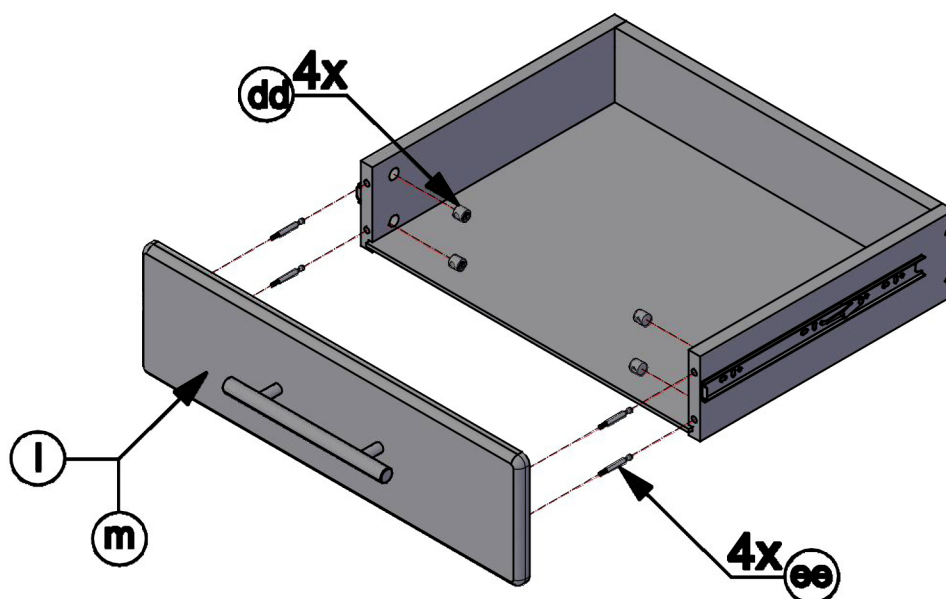
## STEP 9



3x

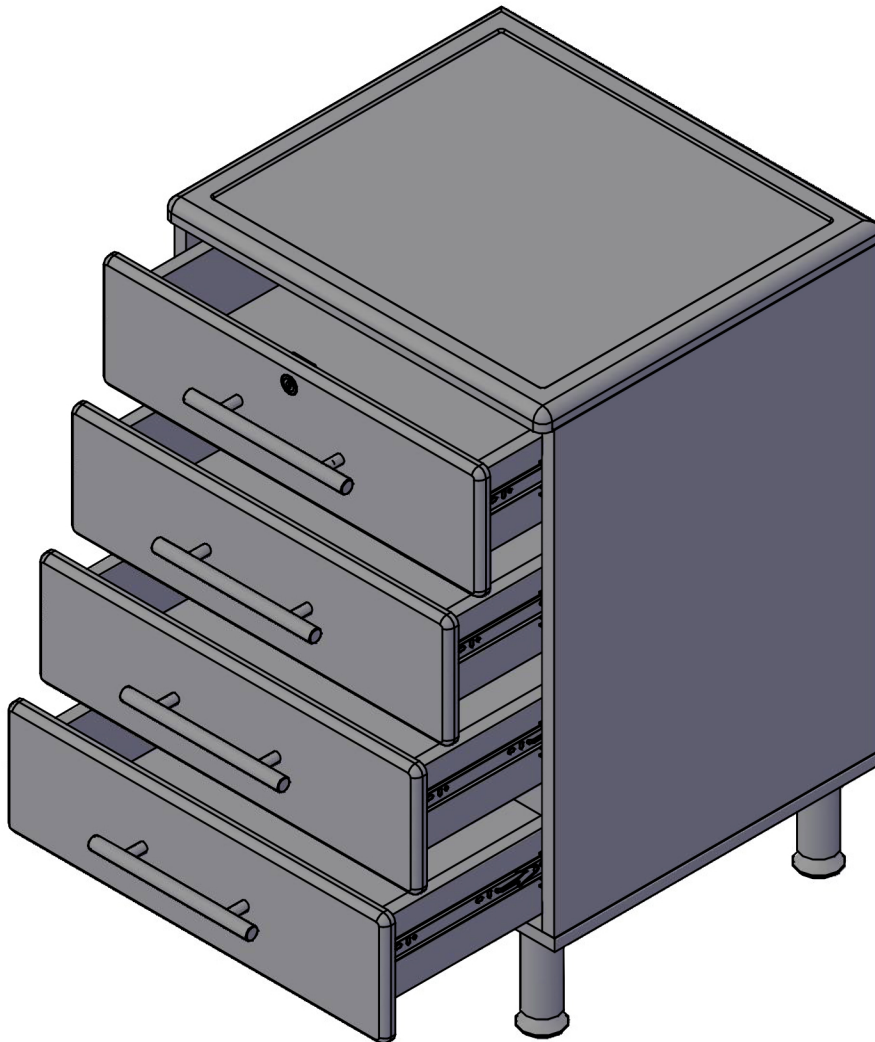
## STEP 10

NOTE: When installing drawers into cabinet, don't use too much force. There's a small amount of resistance needed to get drawer to fully engaged. Be Careful.



4x

## STEP 11



Thank you for your purchase of our award-winning products and visit us at: [www.ulti-mategarage.com](http://www.ulti-mategarage.com)