



ASSEMBLY INSTRUCTIONS

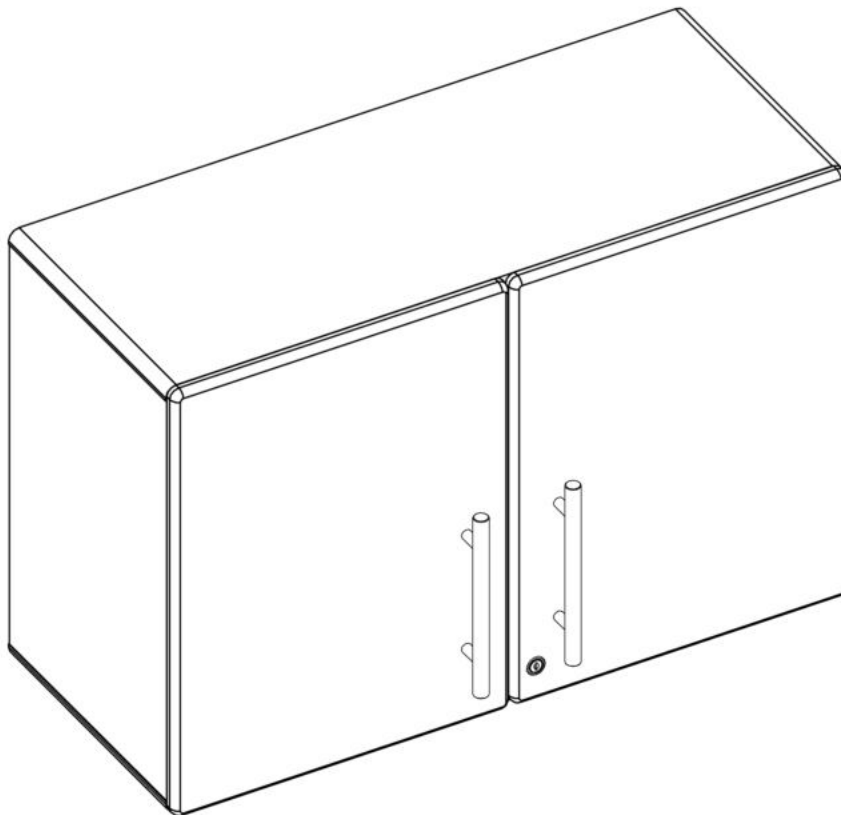
Two Door Large Wall Cabinet

Model Number: UG21008

In the event of missing or damaged parts:

PLEASE CALL: 949-713-3338 | customersvc@ulti-mategarage.com

NOTE: Do Not Call Retailer - Contact Manufacturer Direct For Faster Service.



Ulti-MATE Garage | 30021 Tomas, Rancho Santa Margarita, CA 92688.
T: 949-713-3338 | W: www.ulti-mategarage.com

Rev 1.09

PARTS LIST

BASE CABINET MODEL: UG21008

In the unlikely event of missing or damaged parts

PLEASE CALL : 949-713-3338

WEB: www.ulti-mategarage.com

TOOLS NEEDED FOR ASSEMBLY



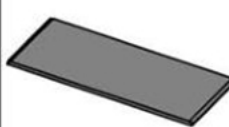
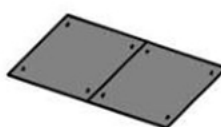
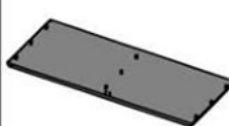

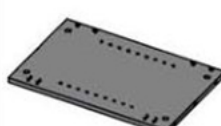




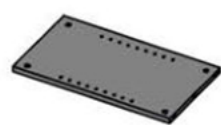

Phillips
Screw
Driver



Flat
Screw
Driver



Rubber
Mallet

#	DESCRIPTION	QTY	IMAGE	#	DESCRIPTION	QTY	IMAGE
a	Top Panel	1		g	Back Panel	1	
b	Bottom Panel	1		h	Shelf	2	
c	Side Panel	2		i	Left Door	1	
d	Top Spanner	1		j	Right Door	1	
e	Wall Cleat	1		k	Middle Panel	1	
f	Bottom Spanner	1					

PARTS LIST

BASE CABINET MODEL: UG21008

In the unlikely event of missing or damaged parts

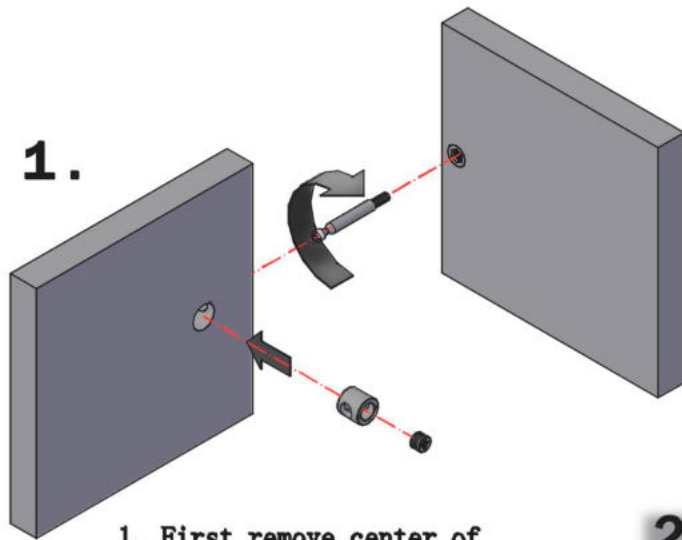
PLEASE CALL : 949-713-3338

WEB: www.ulti-mategarage.com

#	DESCRIPTION	QTY	IMAGE	#	DESCRIPTION	QTY	IMAGE
aa	Logo	1		jj	Screw 5*15mm	8	
bb	Pull	2		kk	Hinge	4	
cc	Pull Screw 4*24mm	4		ll	key	2	
dd	Cam	20		mm	Lock Hardware (Door)	1	
ee	Metal Dowel	20		nn	Lock Hardware (Bottom Panel)	1	
ff	Wooden Dowel	6		oo	Screw 4*16mm	32	
gg	Wall Anchor Screw 4.5*50mm	2		qq	Shelf Clip	8	
hh	Wall Anchor	2		ss	Touch up Crayon	1	
ii	Wall Cleat Grommet	2		tt	Screw 3.5*14mm	4	

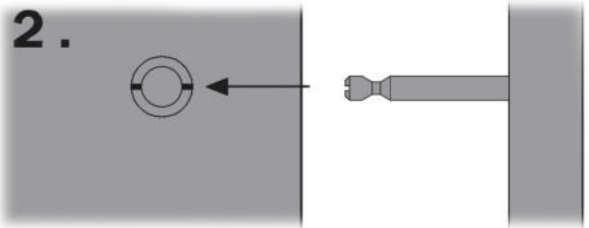
BEFORE YOU BEGIN

CAM STYLE FASTENERS ARE USED THROUGHOUT THE ASSEMBLY OF THIS CABINET. ASSEMBLE ALL CAMS AS SHOWN BELOW.

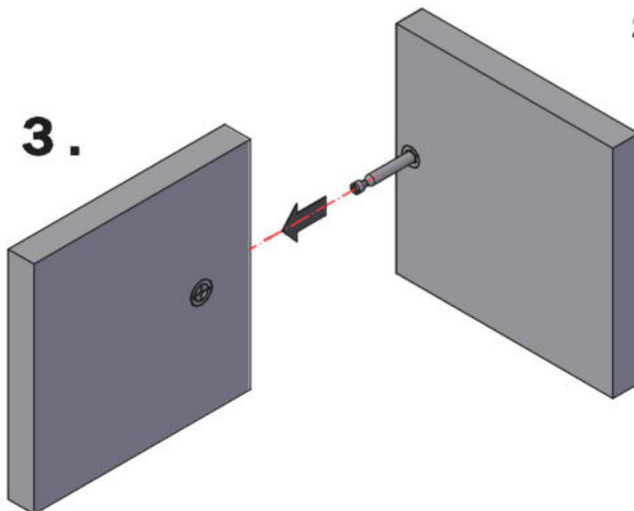


1. First remove center of Cam before inserting Cam outer ring into panel.

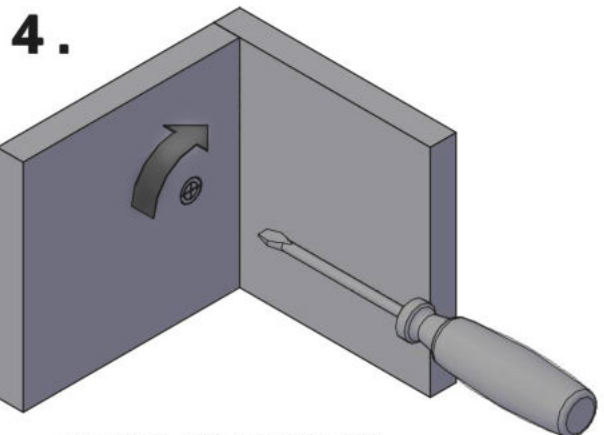
NOTE: After removing Cam(dd) screw, put in safe place. Make sure Cam is aligned as pictured and fully seated in hole. Test by inserting Metal Dowel(ee) into Cam. If Metal Dowel(ee) can't fully be inserted into Cam, pull out Cam and with flat head screwdriver, gently scrape away and loose wood and reinsert Cam properly aligned.



2. ALIGN CAM SLOT & HOLE FOR METAL DOWEL

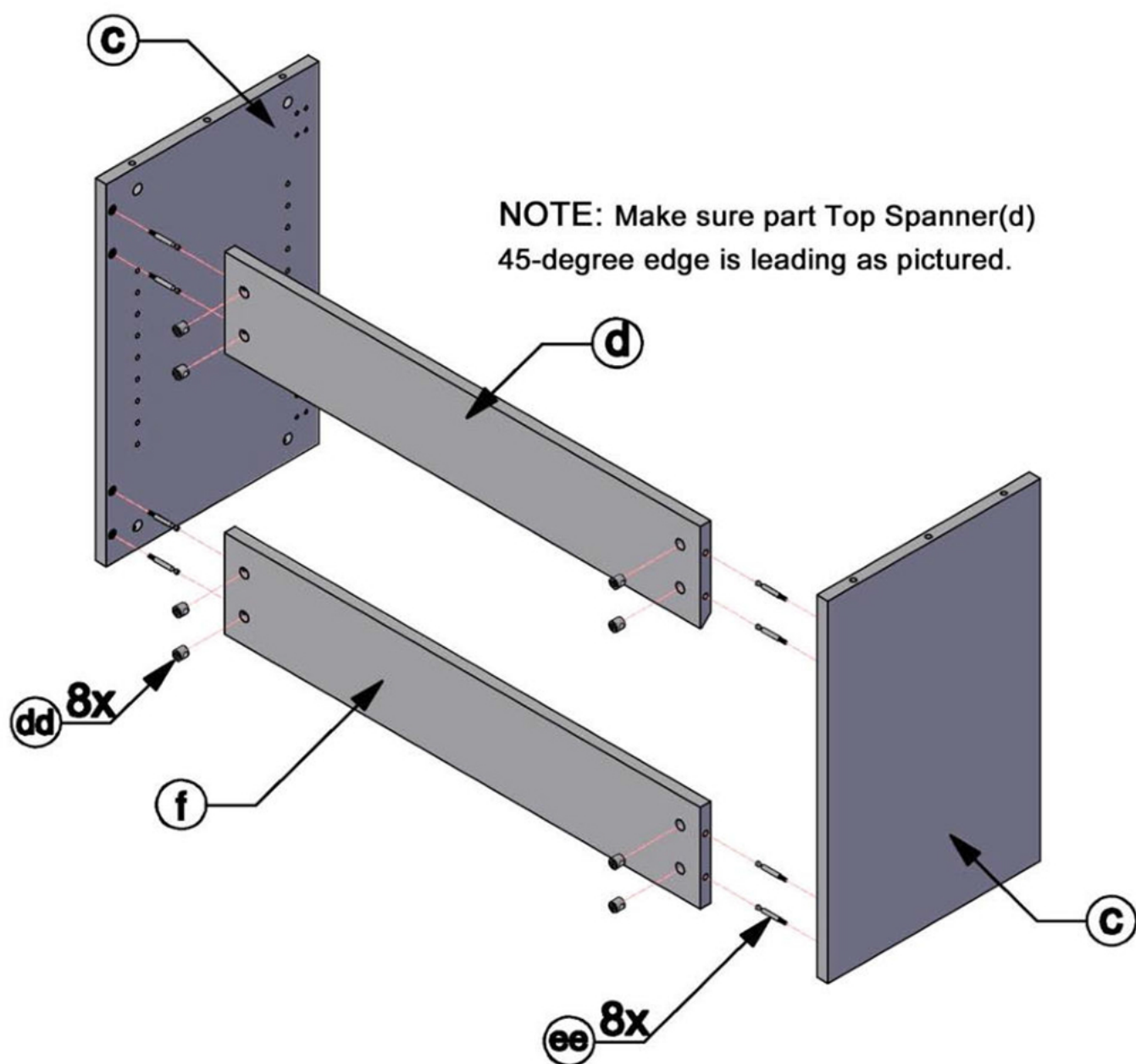


3. Install Metal Dowel (ee) into Cam outer ring before installing center of Cam into Cam outer ring (to prevent center of Cam blocking Dowel)

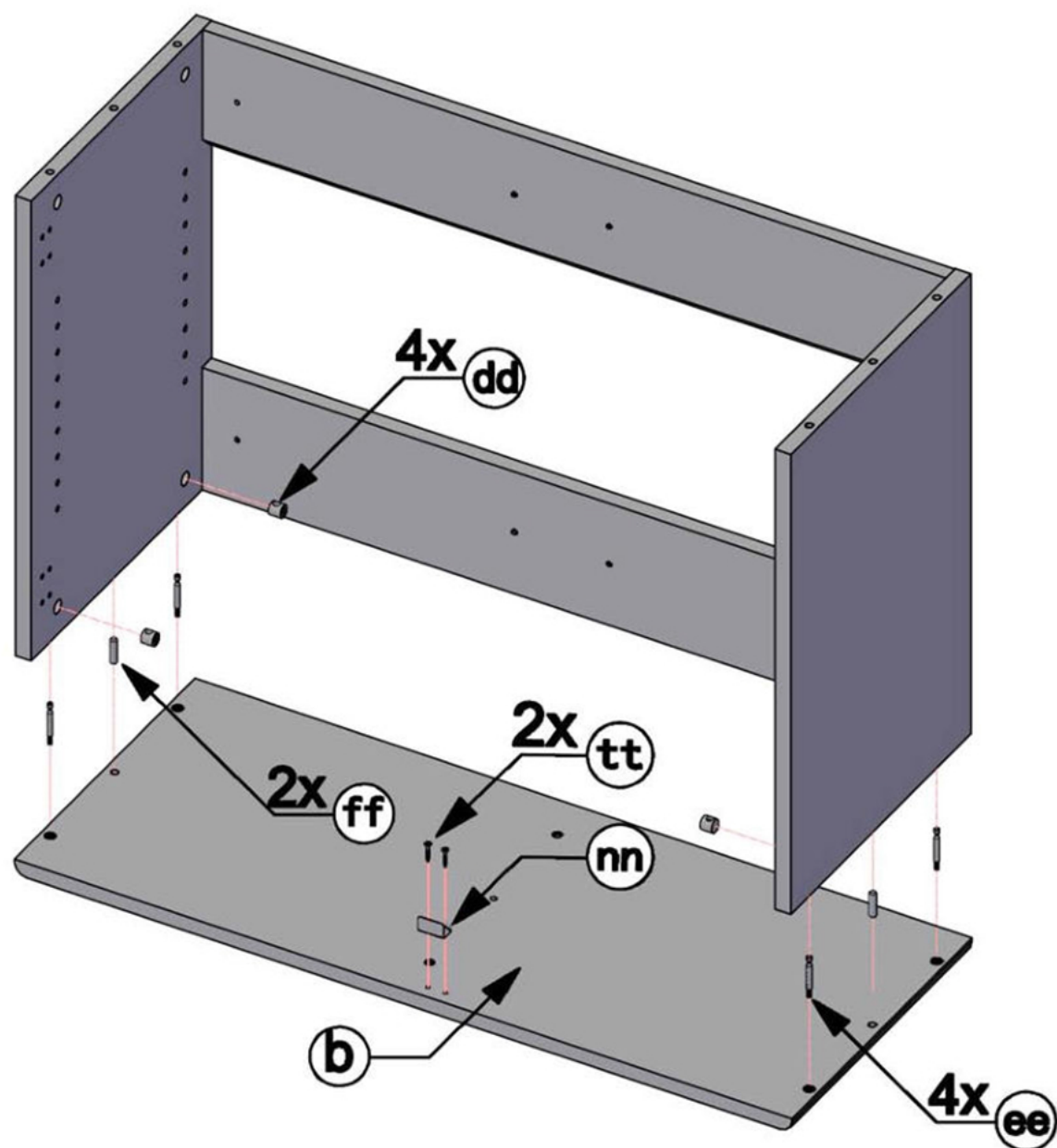


DO NOT OVERTIGHTEN

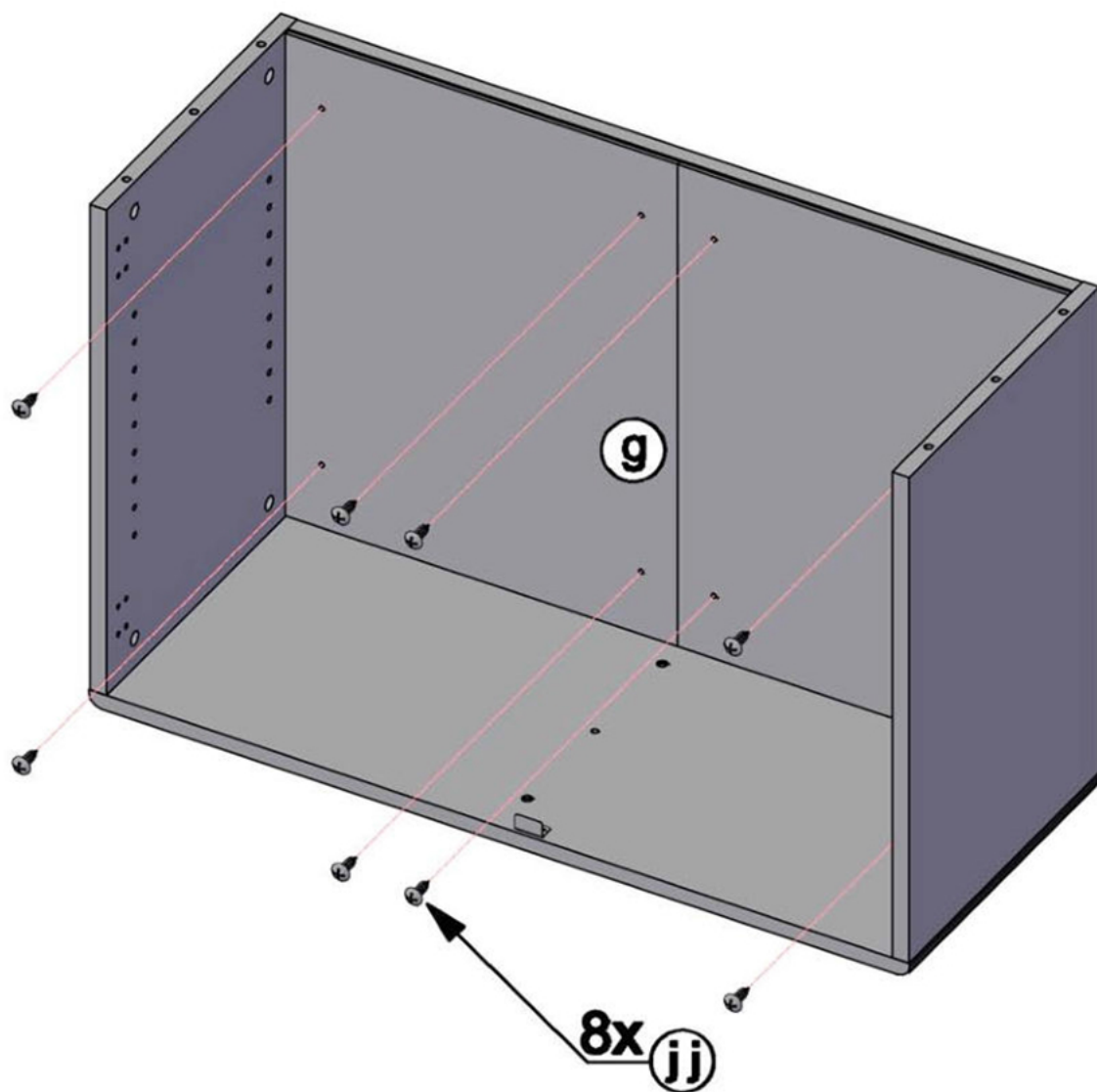
STEP 1



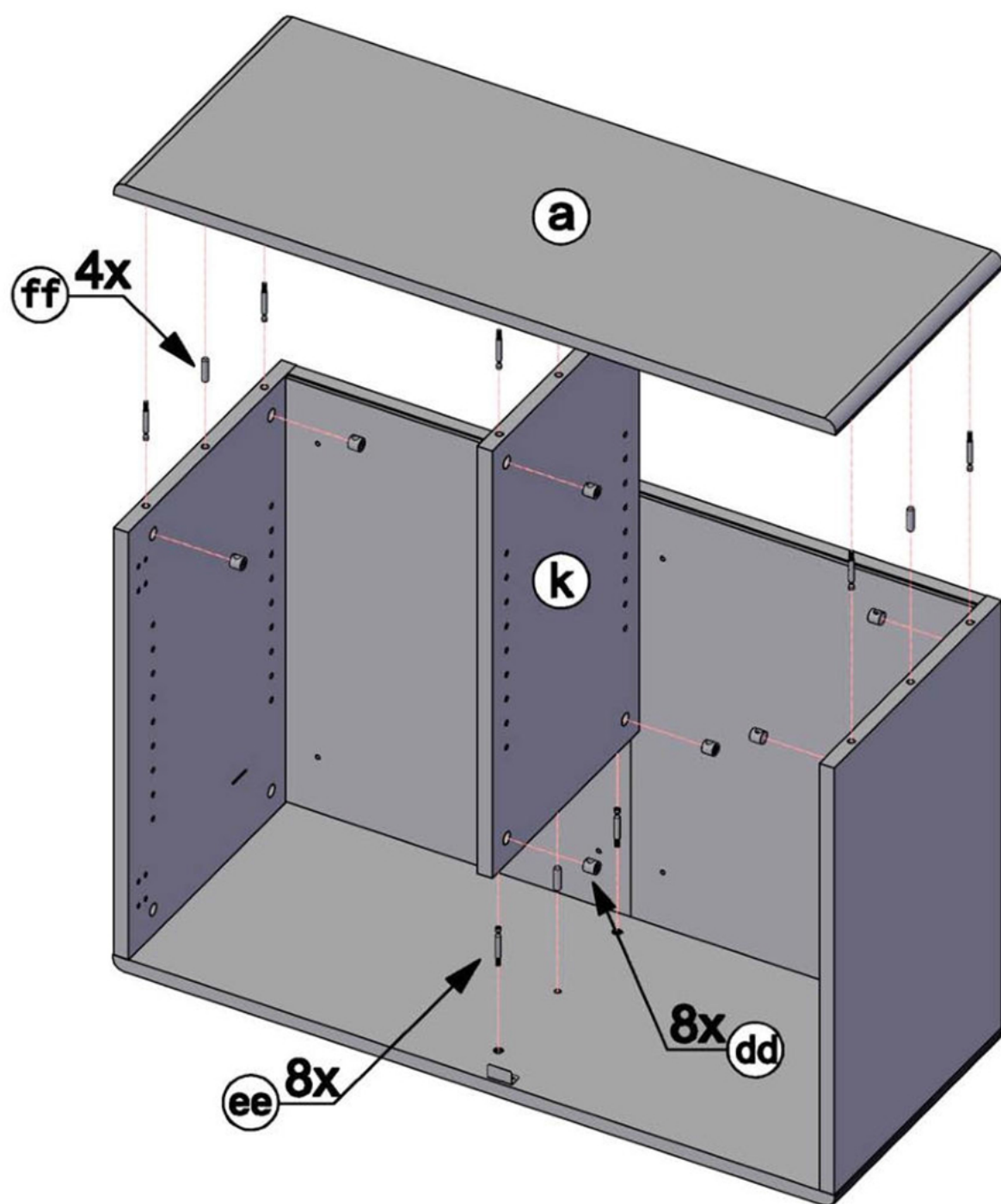
STEP 2



STEP 3

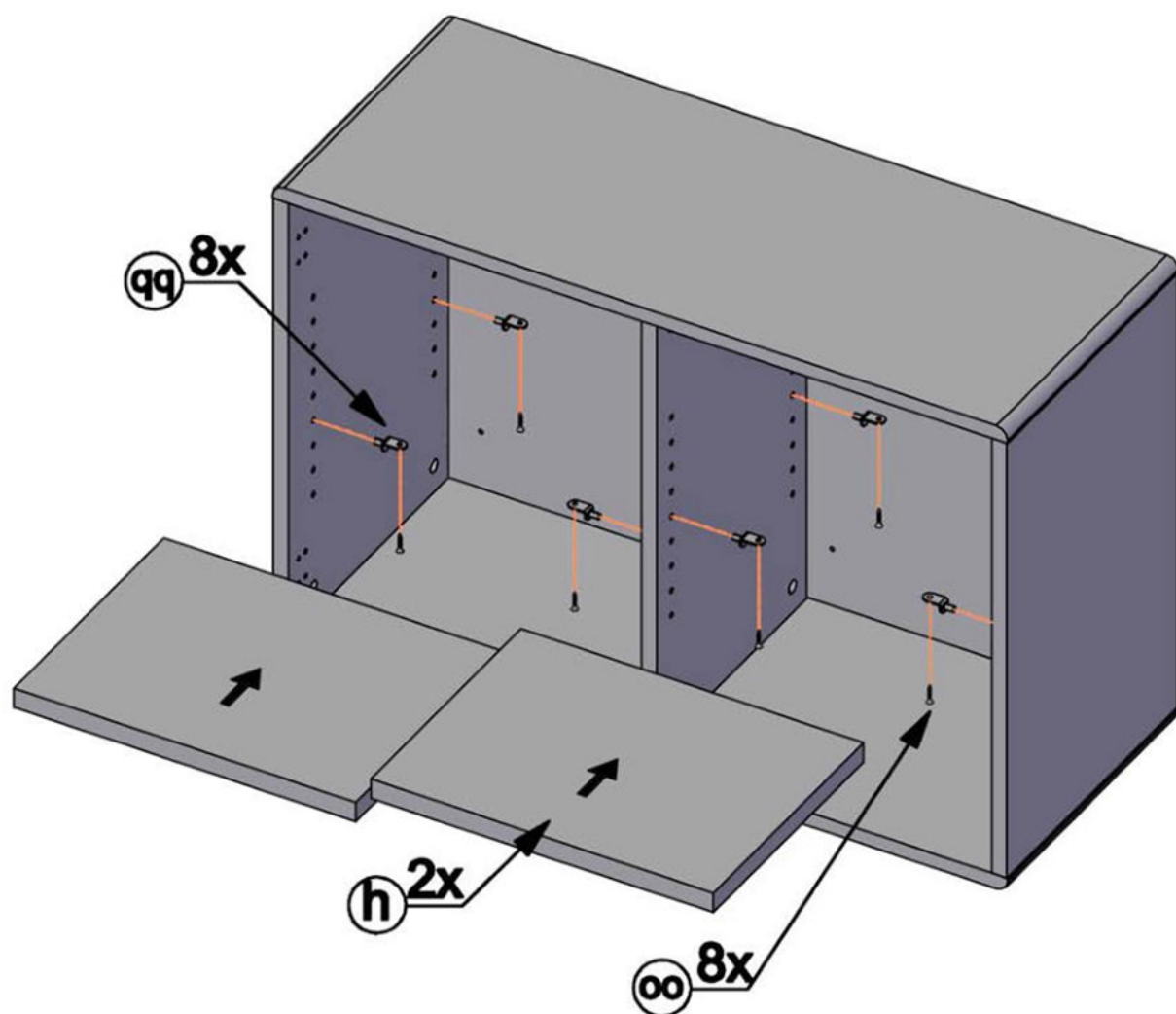


STEP 4



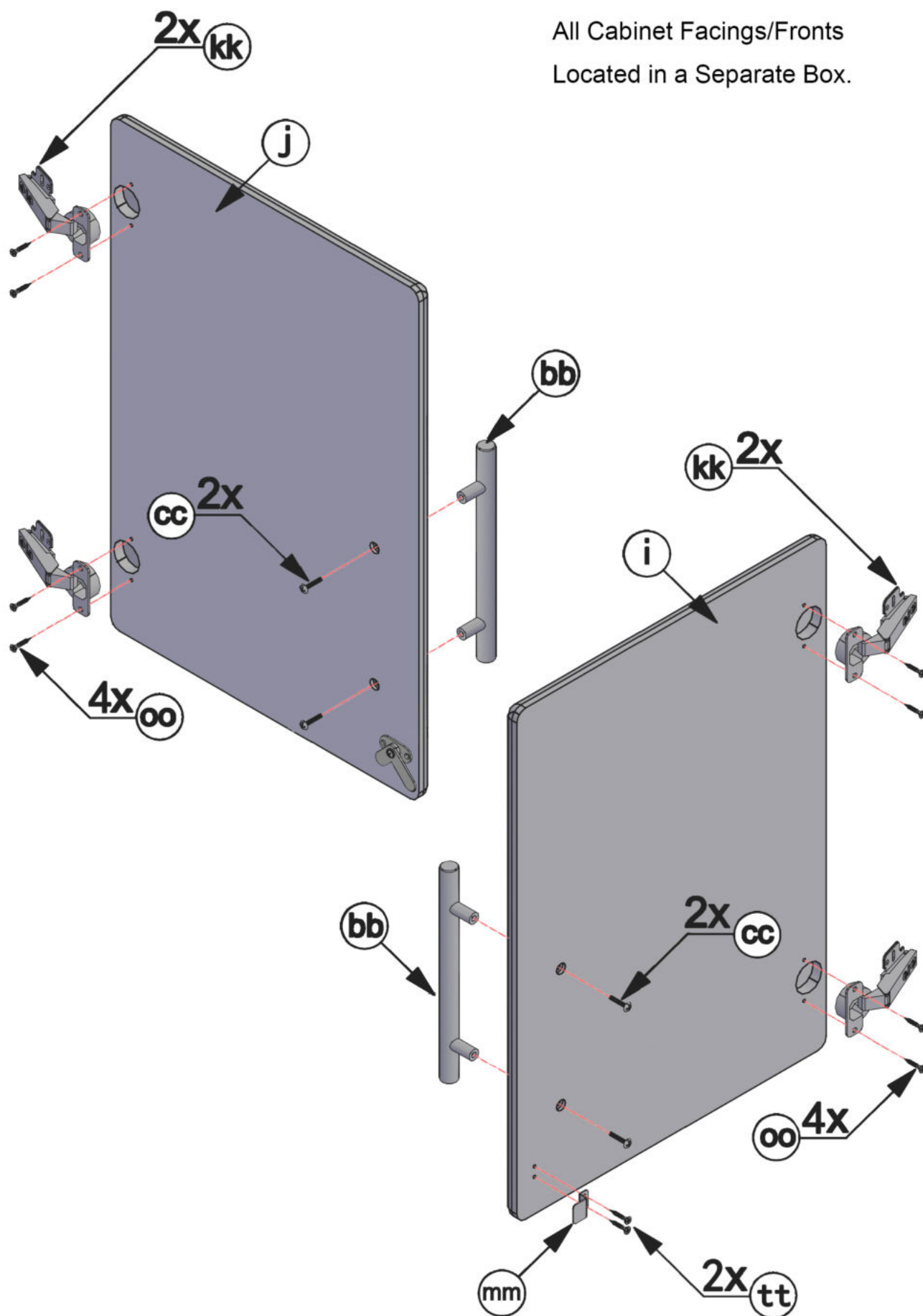
STEP 5

NOTE: Installing Shelf and Doors can be done after cabinet secured to wall, so to reduce weight when picking up cabinet. Get Help.

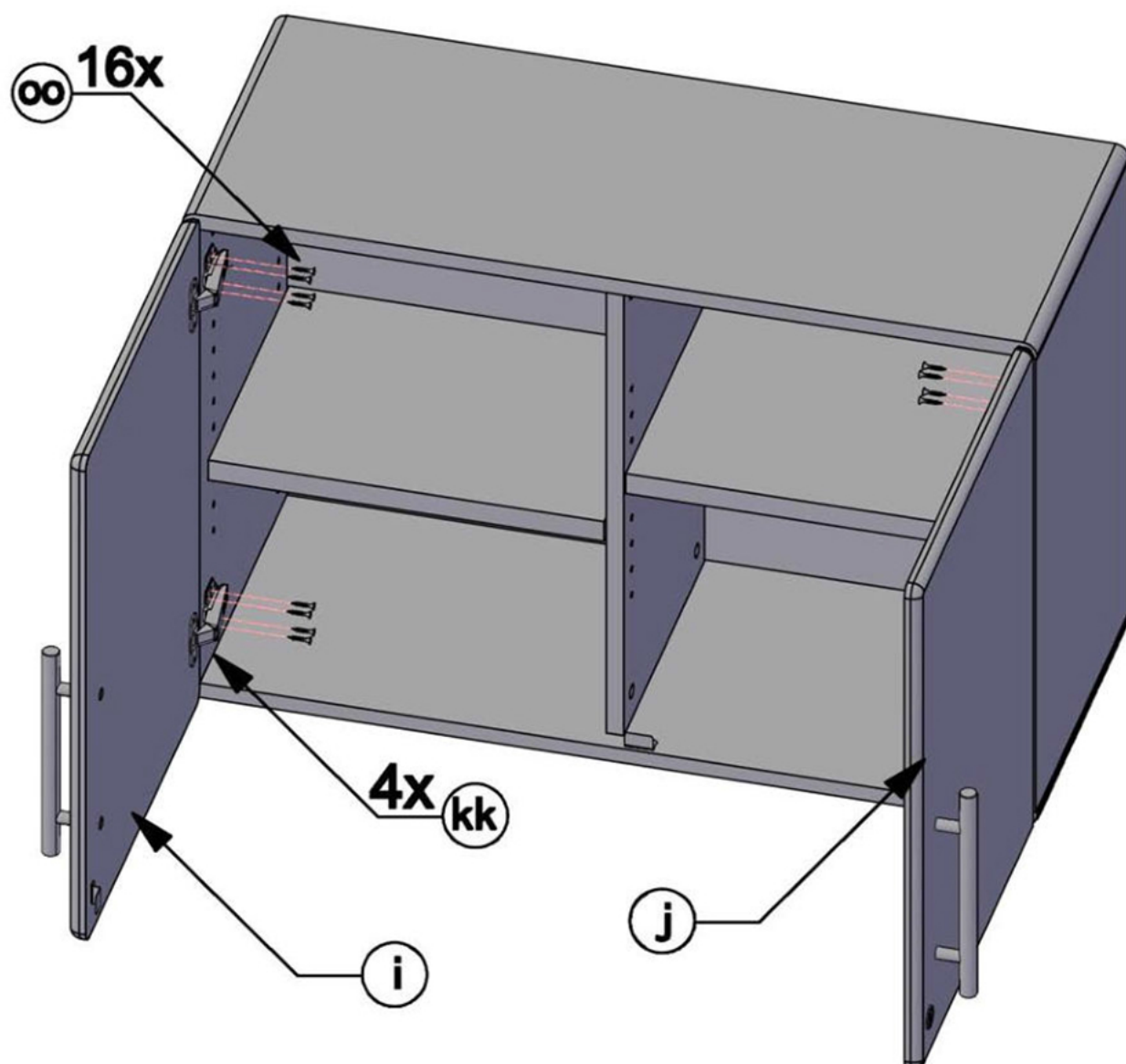


STEP 6

All Cabinet Facings/Fronts
Located in a Separate Box.

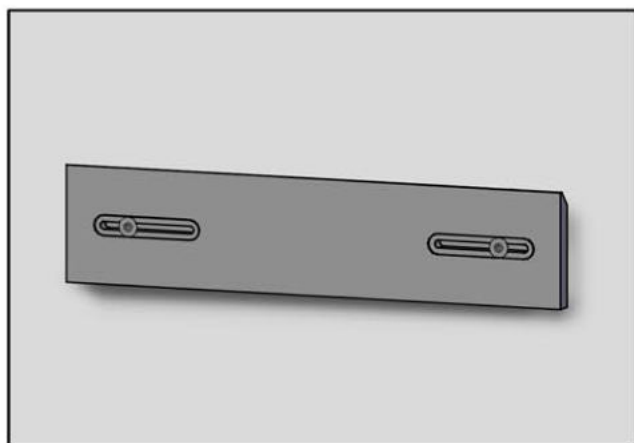
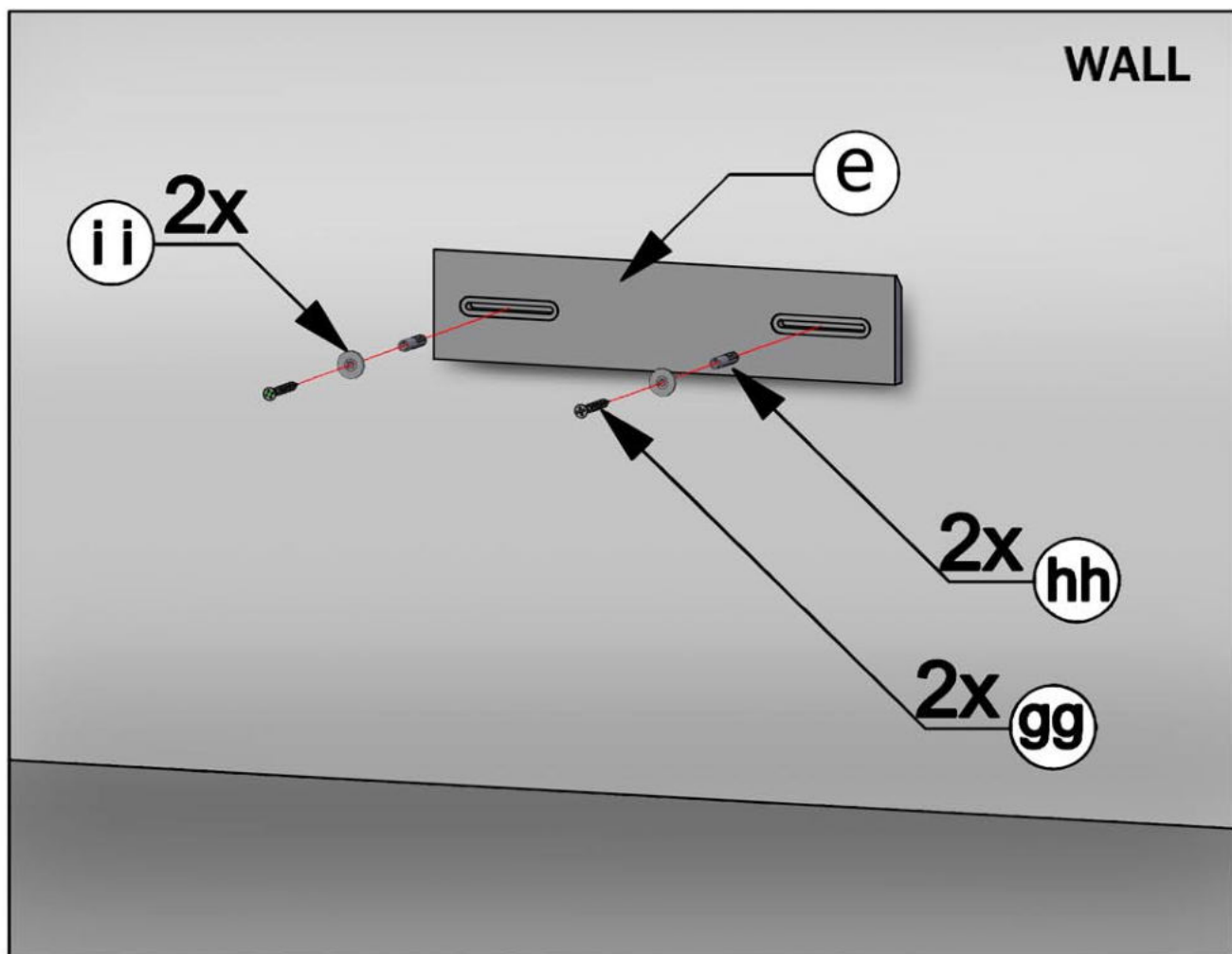


STEP 7



NOTE: European Hinges are “fully” adjustable, so to ensure Doors hang properly, To learn more about adjusting European hinges, go to YouTube to watch video.

STEP 8



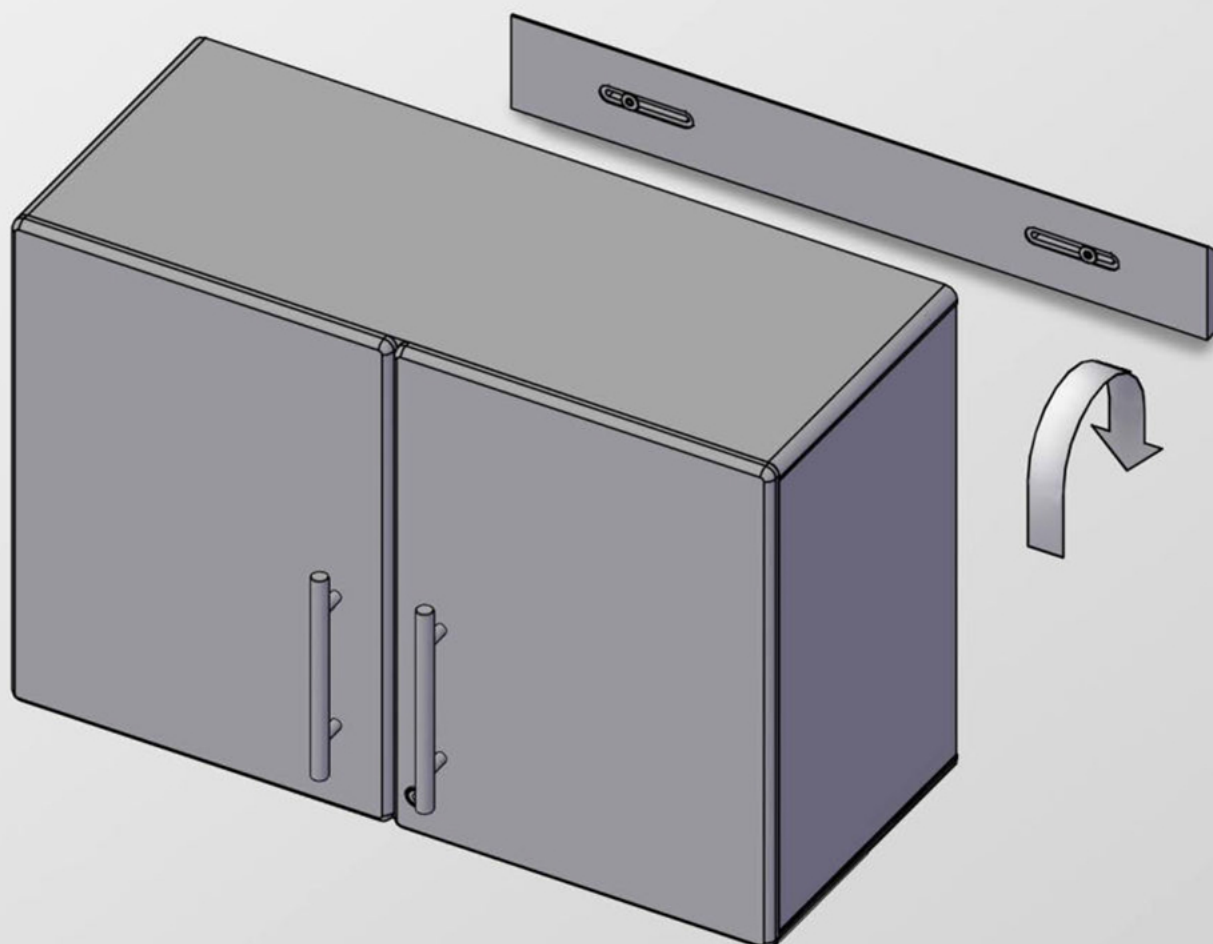
To Mount To Wall, Screw Directly Into Studs When Available. Use Supplied Anchors (hh) When Studs Are Not Available.

NOTE: Make sure wall Cleat(e) 45-degree angle is mounted as pictured, so to cleat to Top Spanner(d).

Weight Rating Is 150 Pounds For A Single Cabinet.

Do Not EXCEED 150 Pounds.

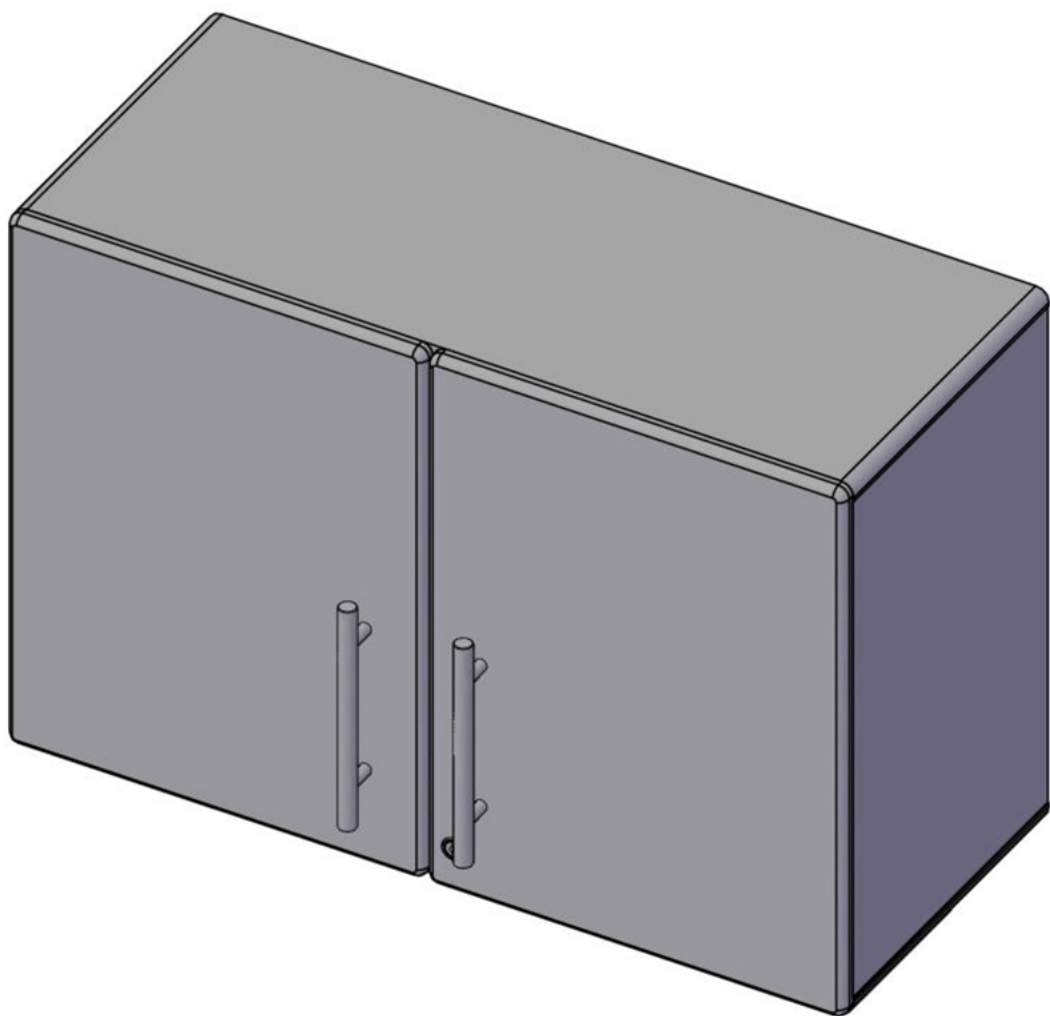
When anchoring to dry wall (with no studs) , it is strongly recommended that you limit the weight in the cabinet to under 50 lbs. You may want to test the cabinet strength before loading.

WALL

NOTE: Cabinet Is Heavy , Get Help Picking Up Cabinet Over Wall Hanging Cleat And Slowly Lower Until Cabinet Secured To Wall Cleat.

STEP 10

NOTE: If Doors do not lock fully, refer in manual to page(s) showing assembling “Lock Hardware”, and or, hinges require adjustment. If you do not want to adjust hinges, with Left Hand push both doors inward while turning key with Right Hand.



Thank you for your purchase of our award-winning products and visit us at: www.ulti-mategarage.com