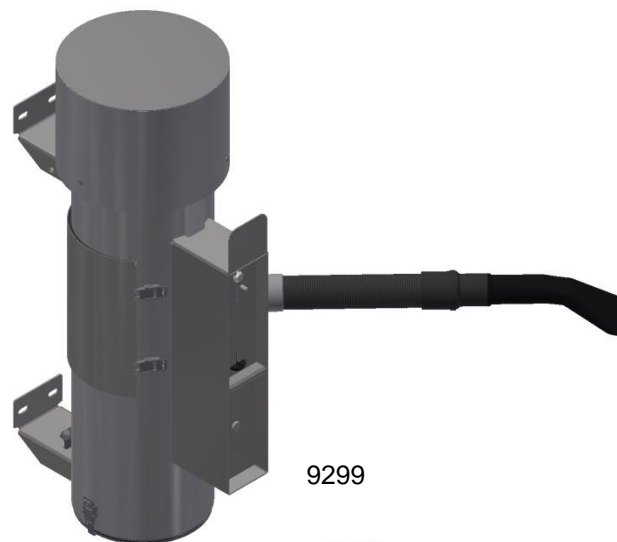


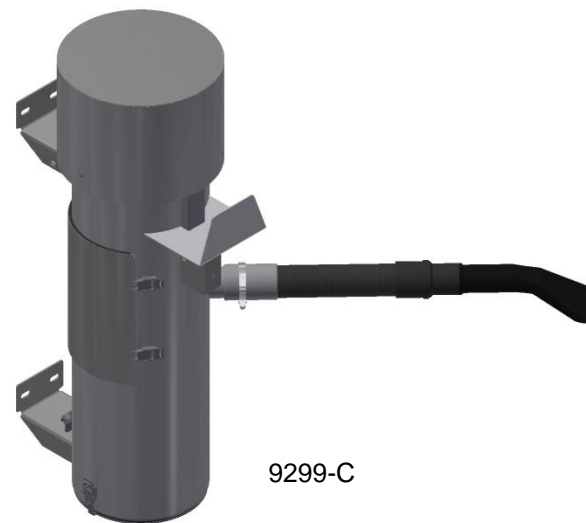


Models - 9299, 9299-C

Page 2	Product Information
Page 3	Specifications
Page 4	Important Safety Instructions
Page 5	Product Dimensions
Page 6-9	Installation
Page 9-11	Programming
Page 12	Operating Instructions
Page 12-13	Maintenance & Troubleshooting
Page 14-17	Parts List
Page 18-19	Wiring Diagram



9299



9299-C

PRODUCT INFORMATION

Please take a moment to fill out the information below in order to aid us with any future sales or service inquiries. Model number and serial number information can be found on the serial tag located inside the control box and/or on the lower exterior of the can. Key number can be found on the tag that comes attached to the keys. There may be more than one key number depending on unit.

Please keep this information with your records.

MODEL#:_____

SERIAL#:_____

KEY NUMBER(S):_____

DATE PURCHASED:_____

DISTRIBUTOR:_____

**J.E. Adams Industries
1025 63rd Ave. S.W.
Cedar Rapids, IA 52404
1-800-553-8861
www.jeadams.com**

Specifications

Unit specifications:

Voltage: 120VAC, 60Hz
Amperage: (1) 20 amp service is required for this unit
Weight: 60-70 lbs
Motors: (1) 120VAC vacuum motor
Fuses: (1) 20 amp inline fuses

Duty cycle time 4 minutes on, 4 minutes off.

NOTE: "UNIT INTENDED FOR COMMERCIAL USE ONLY"

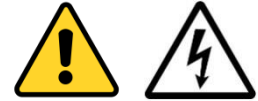
IMPORTANT SAFETY INSTRUCTIONS

When using an electrical appliance, basic precautions should always be followed, including the following:

READ ALL INSTRUCTIONS BEFORE USING (THIS APPLIANCE)

WARNING – To reduce the risk of fire, electric shock, or injury:

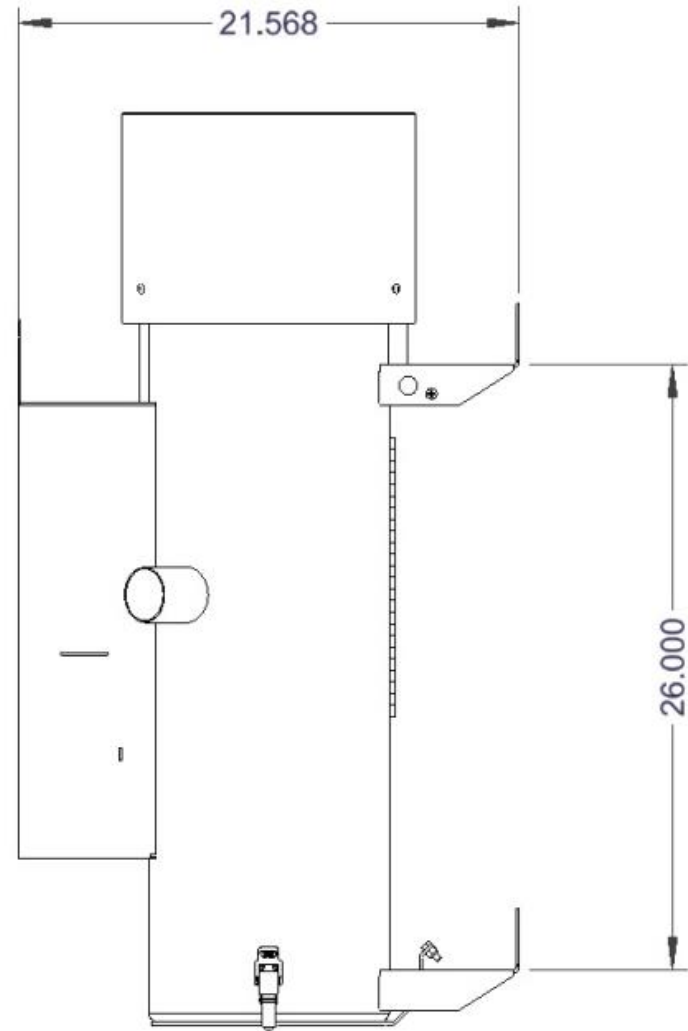
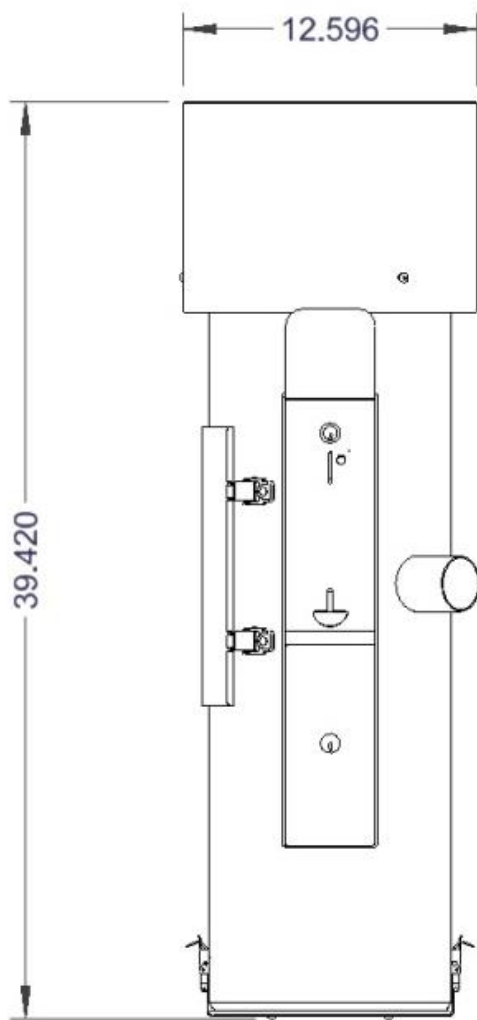
- Do not use on wet surfaces.
- Use only as described in manual. Use only manufactures recommended attachments.
- Do not allow to be used as a toy. Close attention is necessary when used by or near children.
- Do not put any object into openings. Do not use with any opening blocked; keep free of dust, lint, hair and anything that may reduce air flow.
- Keep hair, loose clothing, fingers, and all parts of body away from openings and moving parts.
- Do not use to pick up flammable or combustible liquids, such as gasoline, or use in areas where they may be present.
- Do not pick up anything that is burning or smoking, such as cigarettes, matches, or hot ashes.
- Do not use without dust bag and/or filters in place.



SAVE THESE INSTRUCTIONS

- **Installation Instructions:**
- Determine location to mount unit (**“DANGER” “THIS EQUIPMENT INCORPORATES PARTS SUCH AS SWITCHES, MOTORS, OR THE LIKE THAT TEND TO PRODUCE ARCS OR SPARKS THAT CAN CAUSE AN EXPLOSION. WHEN LOCATED IN GASOLINE-DISPENSING AND SERVICE STATIONS INSTALL AND USE AT LEAST 20 FEET (6 M) HORIZONTALLY FROM THE EXTERIOR ENCLOSURE OF ANY DISPENSING PUMP AND AT LEAST 18 INCHES (450 MM) ABOVE A DRIVEWAY OR GROUND LEVEL.”**)
- Run service to the location
- **Grounding Instructions:** This appliance must be connected to a grounded metal, permanent wiring system; or an equipment-grounding conductor must be run with the circuit conductors and connected to the equipment-grounding terminal or lead on the appliance.
- **Circuit must be protected by GFCI device.**
- All local and national electric codes must be followed for installation and use.
- Licensed electricians are recommended for installation.

Product Dimensions

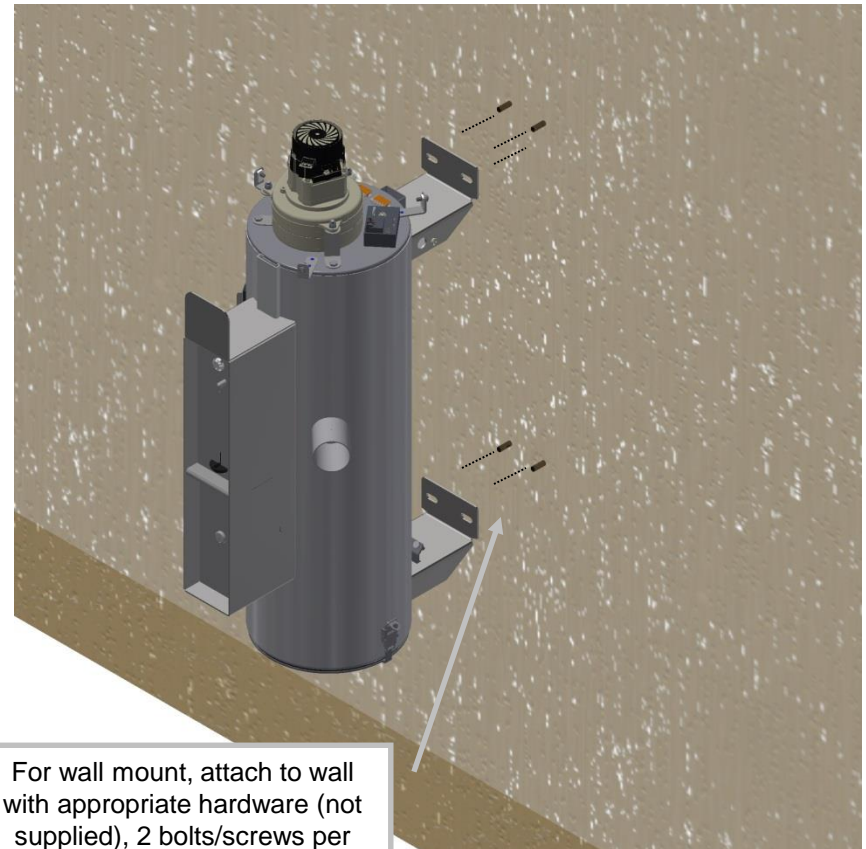


Installation:

Post or wall mount



For post mount use model number "9299-POST" which includes U-bolts to mount vacuum. Kit does not include base attachment hardware.

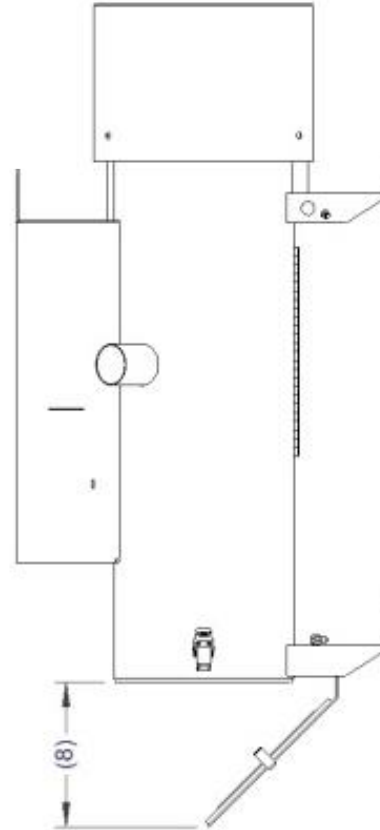


For wall mount, attach to wall with appropriate hardware (not supplied), 2 bolts/screws per bracket as pictured.

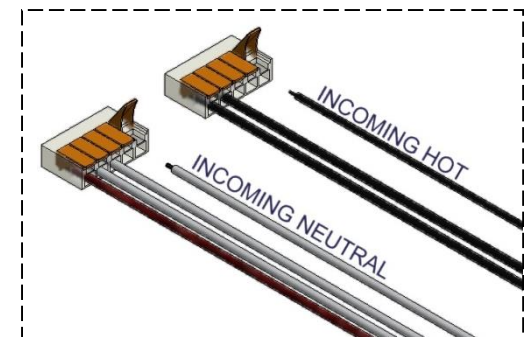
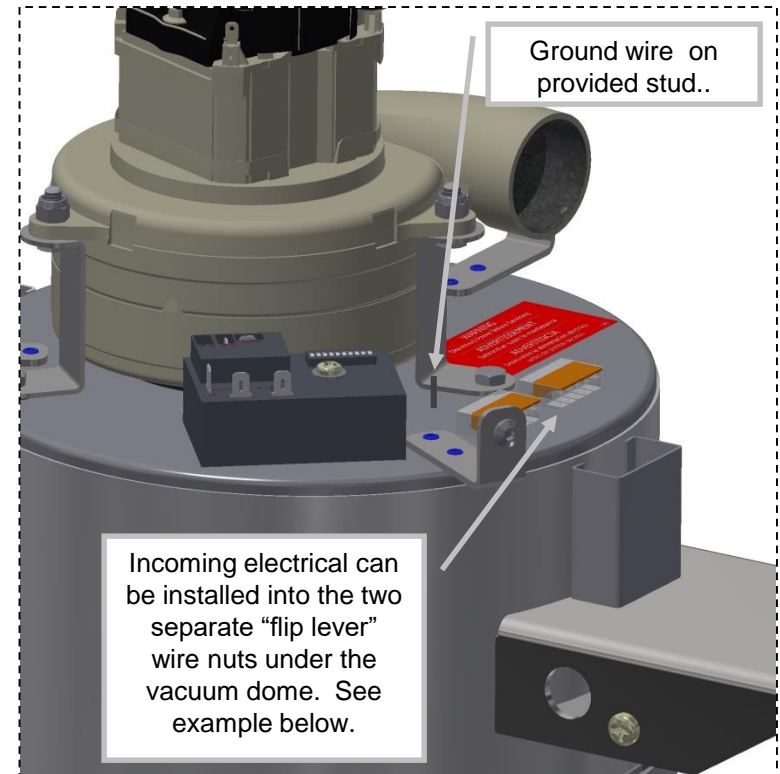
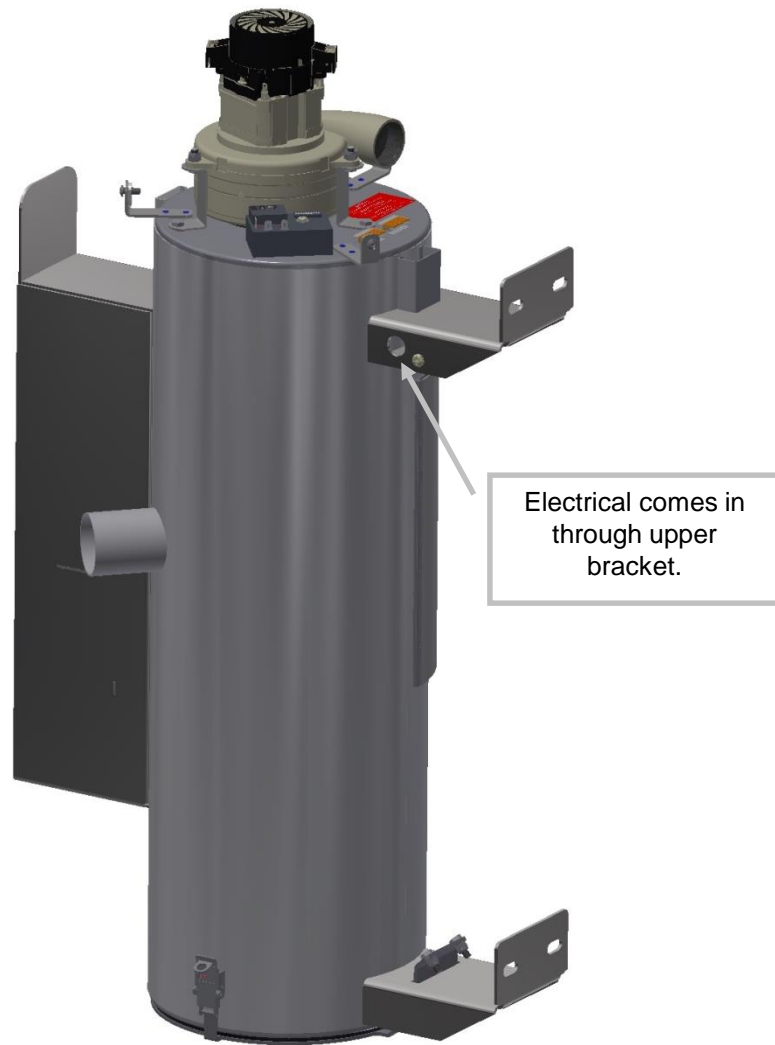
Installation cont.:



Be sure to allow
room for lower trash
door to open.

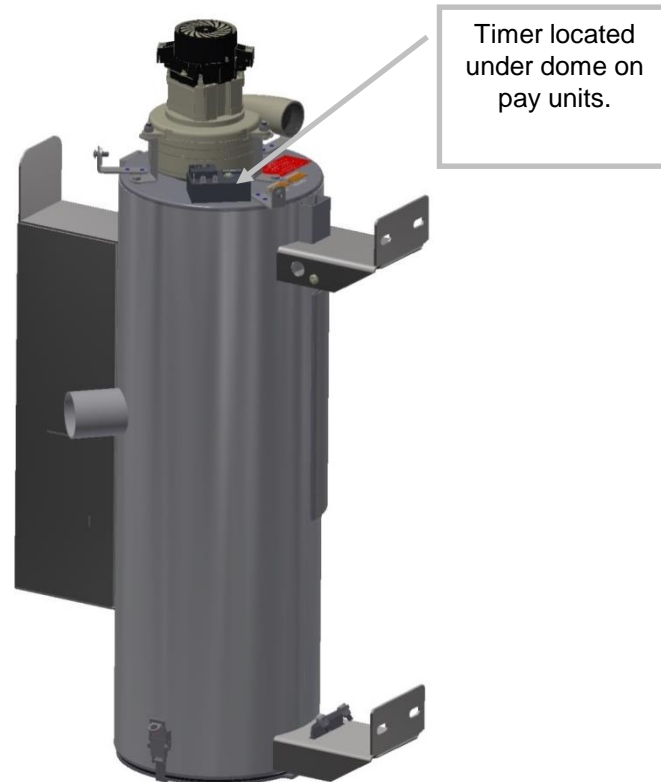


Installation cont.:





To attach hose, slide coupler onto steel inlet and use hose clamp to secure.



Timer located under dome on pay units.

After attaching the hose the unit can be turned on and programmed.

Programming Instructions:

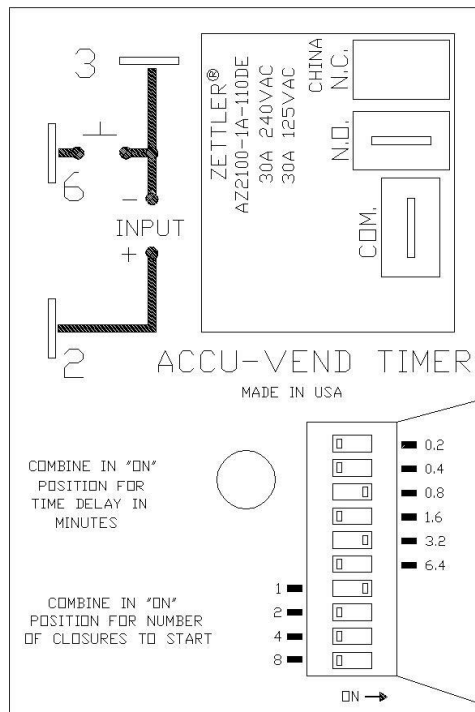
Coin acceptor:

No programming to acceptor needed if unit was purchased with the standard Imonex Z3 acceptor (8149 JEA part number) as it is built to accept US quarters.

If different acceptor was purchased, see additional literature sent with unit for programming information.

COIN OPERATED Timer Programming:

The below timer pictured is the standard SSAC model that allows the end user to select the "coins to start" and the "time per coin" by settings series of dip switches. The number of "coins to start" dip switch is how many quarters are needed to make the machine come on. In the below example, the "one coin" dip is selected which makes the unit come on with one coin. The "time per coins" will then need to be set, but a good rule of thumb would be 4 minutes which requires dip switches 3.2 and .8 to be set to on. This scenario means 1 quarter will provide 4 minutes of vacuum time. The time per coin setting can be modified as desired by simply adding or subtracting time. If the operator would later decide to increase the cost of the unit to "2" quarters, the 2 dip switch would need to be in the on position (all others off) and the time dip switches would need to have the 1.6 and 0.4 daps selected. This would allow 2 minutes of time for each quarter for a total of 4 minutes for two quarters.



Time in minutes/per coin dip switch settings:

0.2 = 12 seconds

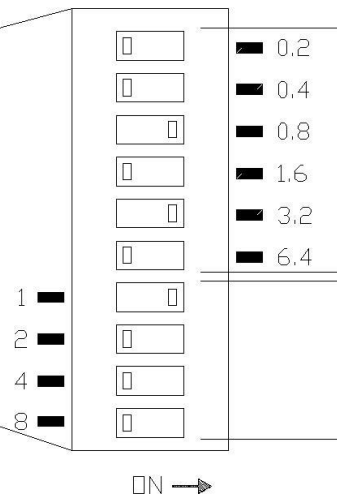
0.4 = 24 seconds

0.8 = 48 seconds

1.6 = 96 seconds

3.2 = 192 seconds

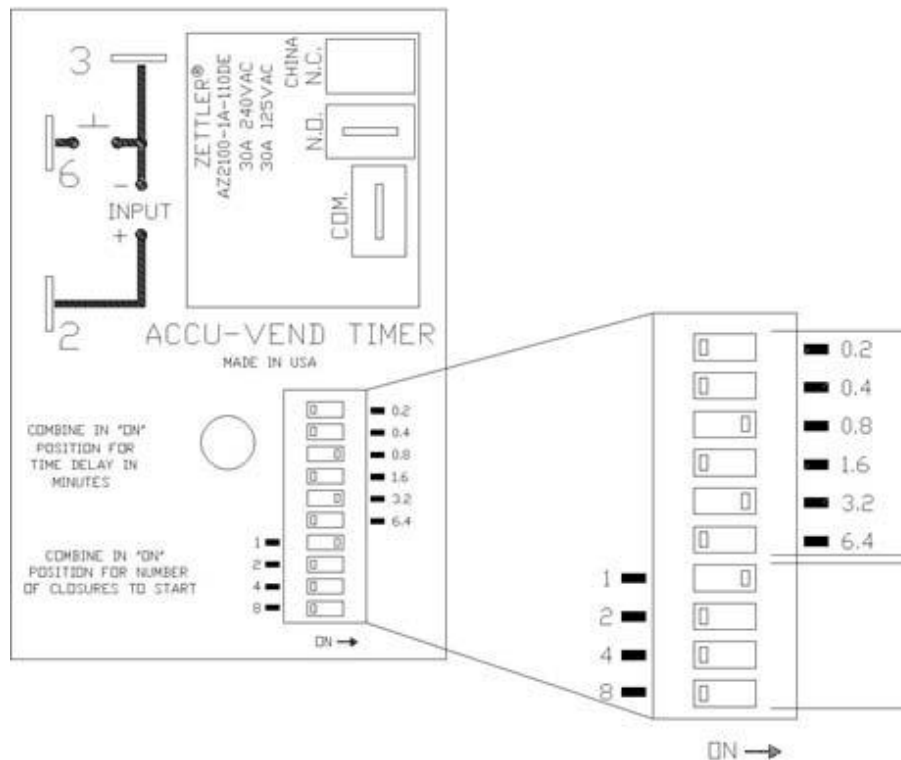
6.4 = 384 seconds



COMMERCIAL VAC Programming:

JE Adams commercial vacuum models typically come with an "on/off" toggle switch, but are also available with the optional push button kit which incorporates the use of a timer. The below timer pictured is the standard SSAC model that allows the end user to select the "coins to start" and the "total time" by settings series of dip switches. The number of "coins to start" dip switch is how many quarters are needed to make the machine come on. In the below example, the "one coin" dip is selected which makes the unit come on with one coin. The "total time" will then need to be set, but a good rule of thumb would be 4 minutes which requires dip switches 3.2 and .8 to be set to on. This scenario means 1 quarter will provide 4 minutes of vacuum time. The total time can always be changed by adding or subtracting time. If the operator would later decide to increase the cost of the unit to "2" quarters, the 2 dip switch would need to be in the on position (all others off) and the time dip switches would still be 3.2 and .8 dips selected for 4 minutes. Timer is non accumulating so "coins to start" setting is just to make the machine come on time and "time" is total time regardless of coins to start.

NOTE: In the case of a free vend machine that incorporates the use of a push button, COINS TO START is set at 1.



Time in minutes; dip switch settings:

0.2 = 12 seconds

0.4 = 24 seconds

0.8 = 48 seconds

1.6 = 96 seconds

3.2 = 192 seconds

6.4 = 384 seconds

Total time
(non accumulating)

Coins To Start

Operating Instructions:

- Insert payment or push button or toggle switch to start vacuum.
- Once service is used, hang up hose.

Maintenance:

- **All servicing of machine should be conducted by an authorized service representative!**
- Cartridge filter some with a nylon cover that should be accessed and shaken down weekly, depending on level of use. It is recommended to keep a new cartridge filter and nylon cover on hand so that service is not interrupted when filter is due to be replaced.
- To maintain performance, empty dirt bin from the canister on a regular basis.
- Periodically inspect wires and connections for wear or fatigue.
- Check door and motor gaskets periodically for signs of wear or damage and replace as needed.
- Check vac hose for cracks on a weekly basis.
- Clean canister with a stainless steel cleaner as needed. Decals can be cleaned with mild soap and water.
- Check motor brushes every month for excessive wear. Motor brushes should be changed immediately if they are shorter than 1/4". ***Please disconnect power before doing this!***



DISCONNECT POWER BEFORE SERVICING OR TROUBLESHOOTING!



Troubleshooting:

Problem	Possible cause	Solution
Unit will not come on.	No power to machine.	Check incoming power.
	Loose or bad connection.	Check incoming power connection.
	Timer has no output.	Check output terminal of timer for voltage.
	Coin mech switch or push button is not sending signal to timer.	Bypass switch and touch the two wire together - USE CAUTION 120V!!
	Vaccum motor is bad.	Replcae vacuum motor.

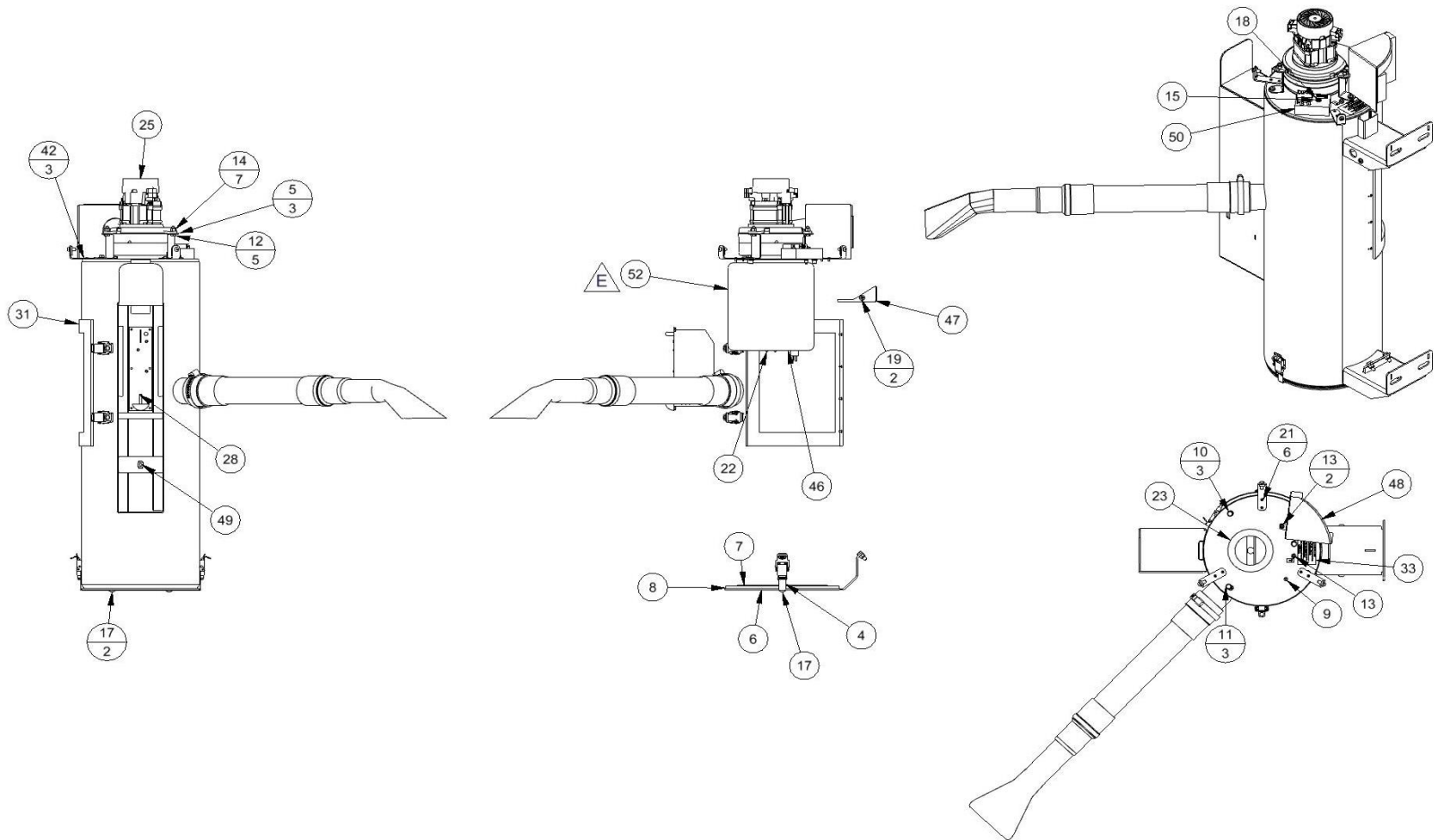
Problem	Possible cause	Solution
Machine is behaving erratically.	Is the incoming power at 120V?	Check voltage and monitor while machine runs. Low voltage can cause erratic behavior.
	Are any of the machines wires worn through or connections not making contact?	Inspect wiring and connections. Look for sharp bends in wires and places where wire is against the metal chassis.
Unit keeps tripping breaker.	Inadequate wire size ran to machine.	Call electrician and install proper wire size for electrical service versus length or run.
	Vacuum motor is bad.	Replace vacuum motor.
	Wrong size breaker.	Install correct breaker providing wire size is rated for that size breaker.
Fuses for vac motors keep blowing.	Inadequate wire size ran to machine.	Call electrician and install proper wire size for 30amp service versus length or run.
	Vacuum motor is bad.	Replace vacuum motor.
	Motor brushes may be bad or too short.	Replace motor brushes.
Lack of vacuum suction.	Vac hose clogged?	Clean debris from vac hose.
	Filter needs cleaned or dirt chamber needs emptied?	Clean filter or replace and empty lower dirt chamber.
	Vac hose is split?	Replace/repair vac hose.
	Cleanout door gaskets torn or worn?	Replace gaskets.
	Vac motor gasket is worn or motor is not tight against.	Inspect/replace gaskets and assure motor is tight against gasket.


PART NO	9299	BILL OF MATERIALS				BILL OF MATERIALS			
		ITEM	PART NUMBER	DESCRIPTION	QTY	ITEM	PART NUMBER	DESCRIPTION	QTY
E		38	8754	DECAL, WARNING	1	1	2036	HOSE, 2" X 15' BLACK VACUUM	1
		39	8953	MEDECO CAM LOCK W/2 KEYS	1	2	2058	CLAW/CUFF ASSEMBLY, 2"	1
		40	8958-1A	MEDECO SCREW LOCK- HIGH SECURITY AIR MACHINE	1	3	2086	COUPLER, 2" PIPE - 2" HOSE	1
						4	35000-113	LOCK BRACKET	1
		41	9202-50-10W	DOME WELDMENT, MINI VAC	1	5	35000-173	BRACKET, MOTOR HOLD DOWN, MINI VAC	3
		42	9202-50-13W	MOUNTING BRACKET WELDMENT, DOME	3	6	35000-63	DOOR, PRE FILTER BOTTOM	1
		43	9202-50-25FPD	FACEPLATE DECAL KIT, MINI-VAC	1	7	35000-63-4	GASKET RETAINER PLATE	1
		44	9202-50-25W	FACEPLATE WELDMENT, MINI VAC	1	8	35000-65	DOOR GASKET, PRE FILTER	1
		45	9202-50-30W	COIN BOX WELDMENT, MINI VAC	1	9	5261D3	RIVET NUT, #10-24, STEEL PLATED	1
		46	9202-50-44	FILTER, PLEATED CARTRIDGE	1	10	5261D5	1/4-20 ZINC PLATED STEEL, RIVET NUT	3
		47	9202-50-46A	ELECTRICAL COVER ASSY, MINI VAC	1	11	5601D13	1/4-20x1/2 SERR HEAD - STAINLESS	3
		48	9202-50-60A	EXHAUST SILENCER ASSEMBLY	1	12	5601D4	1/4-20 x 3/4 HHCS-SS	5
		49	9202-50W	CAN WELDMENT, MINI VAC	1	13	5603D1	NUT #10-24, NYLOCK, SS	2
		50	9299-WIREKIT	MINI-VAC WIRE KIT	1	14	5603D2	1/4-20 NYLOCK NUT, SS	7
		51	9299BOX	BOX, 48L X 24D X 12H ID	1	15	5606D1	#10 SAE WASHER	1
		52	9202-50-44BAG	FILTER BAG, w/DRAWSTRING	1	16	5619D1	SCR, HEX SOC BUT, HD CPCW, 1	3
						17	5635D4	BOLT, CARRIAGE, 1/4-20 UNC	2
						18	5636D4	SCREW, #10-24x1.50, PH, PD, SS	1
						19	5640D1	1/4-20 x 1/2 PHIL PAN HEAD SCREW	2
						20	5647D2	RIVET, 1/8 SS POP RIVET 1/16	12
						21	5647D3	RIVET, 1/8 x .034 SS POP RIVET	6
						22	5664D3	WING NUT, 3/8-16, 18-8 SS	1
						23	8057-10	MOTOR GASKET, MINI VAC	1
						24	8061-720-8	3" HOSE CLAMP, STAINLESS STEEL	1
						25	8061-720EM	TANGENTIAL BYPASS MOTOR, 120VAC	1
						26	8081	CABLE TIE MOUNT	3
						27	8084	CABLE TIE	5
						28	8149	IMONEX COIN ACCEPTOR	1
						29	8153-1	LATCH, CLEANOUT DOOR	4
						30	8157	NUT, #6-32 KEPP NUT STAINLESS	4
						31	8158	DOOR GASKET	1
						32	8176	DECAL, LINE-NEUTRAL-GROUND	1
						33	8183	DECAL, "DISCONNECT POWER"	1
						34	8423-2	DECAL, VACUUM DOME	1
						35	8615-10W	CLEANOUT DOOR WELDMENT, MINI VAC	1
						36	8732	NAMEPLATE, PRODUCT SPEC DECAL	1
						37	8753	DECAL, WARNING, TRI-LING	1

E	8948	ADDED 9202-50-44BAG	12/1/22	BJL
D	8588	REPLACE 2081 WITH 2086	04/22/20	JRF
C	8559	ADD BOX FOR PACKAGING	02/20/20	JRF
B	8549	REMOVE 9202-50-44BAG AS NO LONGER NEEDED	01/31/20	JRF
REV	NO.	DESCRIPTION	DATE	BY

TITLE		MINI-VAC, SINGLE MOTOR	
UNSPECIFIED TOLERANCES	MATERIAL	CEDAR RAPIDS, IOWA	
1 PL ±.030	DRAWN BY	JOHN F	
2 PL ±.020	DATE	3/30/2017	
3 PL ±.003	SCALE	.085	
ANGLE ± 1°	SHEET	1 / 3	
PART NO		9299	
REV.		E	

THIS DOCUMENT SHALL NOT BE REPRODUCED NOR SHALL THE INFORMATION THEREIN BE USED BY OR DISCLOSED TO OTHERS EXCEPT AS AUTHORIZED BY J.E. ADAMS INDUSTRIES



TITLE		MINI-VAC, SINGLE MOTOR		CEDAR RAPIDS, IOWA	
UNSPECIFIED TOLERANCES 1 PL ±.030 2 PL ±.020 3 PL ±.003 ANGLE ± 1°		MATERIAL		 CEDAR RAPIDS, IOWA	
		DRAWN BY JOHN F			
		DATE 3/30/2017			
		SCALE .085			
		SHEET 2 / 3		PART NO 9299	
				REV. E	

REV	NO.	DESCRIPTION	DATE	BY
-----	-----	-------------	------	----

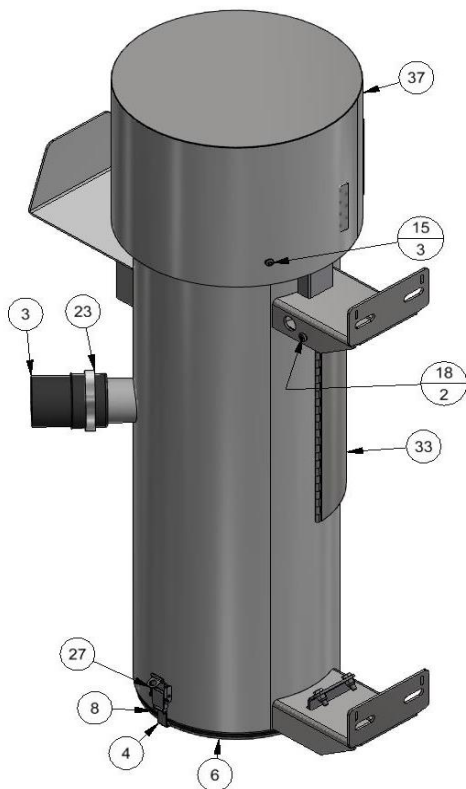
THIS DOCUMENT SHALL NOT BE REPRODUCED NOR SHALL THE INFORMATION THEREIN BE USED BY OR DISCLOSED TO OTHERS EXCEPT AS AUTHORIZED BY J.E. ADAMS INDUSTRIES

9299-C

BILL OF MATERIALS

ITEM	PART NUMBER	DESCRIPTION	QTY
38	9202-50-13W	MOUNTING BRACKET WELDMENT, DOME	3
39	9202-50-44	FILTER, PLEATED CARTRIDGE	1
40	9202-50-46A	ELECTRICAL COVER ASSY, MINI VAC	1
41	9202-50-60A	EXHAUST SILENCER ASSEMBLY	1
42	9202-51W	CAN WELDMENT, MINI VAC	1
43	9299-C-WIREKIT	WIRE KIT FOR 9299 TOGGLE	1
44	9299BOX	BOX, 48L X 24D X 12H ID	1
45	9202-50-44BAG	FILTER BAG, w/DRAWSTRING	1

F



BILL OF MATERIALS

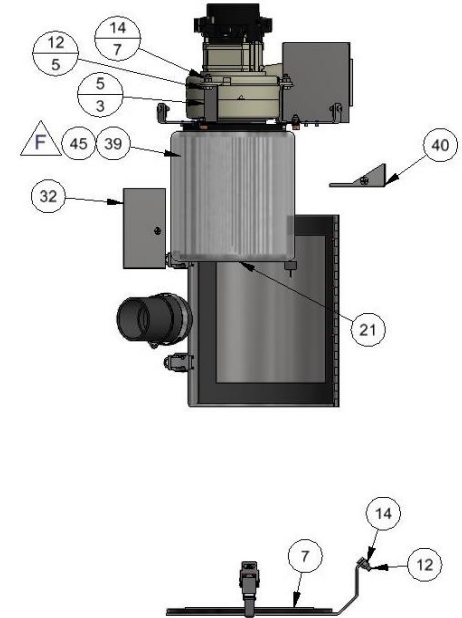
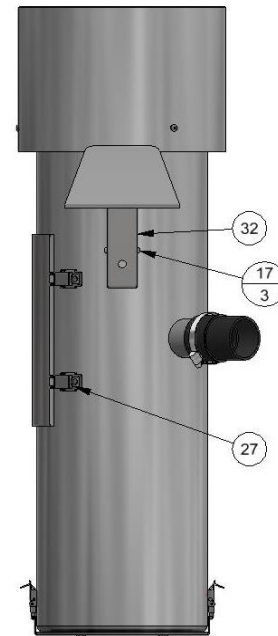
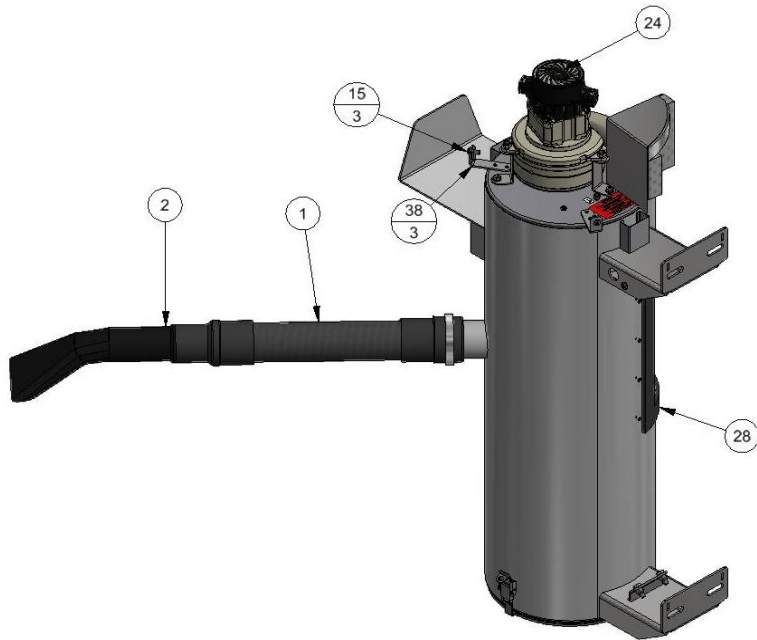
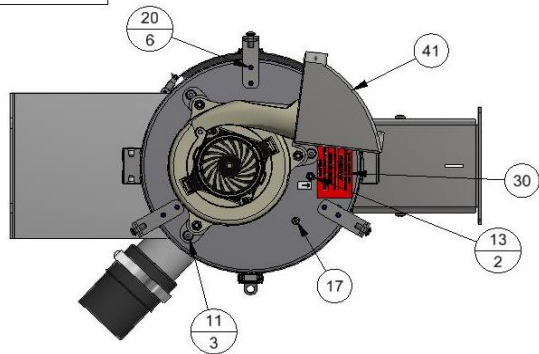
ITEM	PART NUMBER	DESCRIPTION	QTY
1	2036	HOSE, 2" X 15' BLACK VACUUM	1
2	2058	CLAW/CUFF ASSEMBLY, 2"	1
3	2086	COUPLER, 2" PIPE - 2" HOSE	1
4	35000-113	LOCK BRACKET	1
5	35000-173	BRACKET, MOTOR HOLD DOWN, MINI VAC	3
6	35000-63	DOOR, PRE FILTER BOTTOM	1
7	35000-63-4	GASKET RETAINER PLATE	1
8	35000-65	DOOR GASKET, PRE FILTER	1
9	5261D3	RIVET NUT, #10-24, STEEL PLATED	3
10	5261D5	1/4-20 ZINC PLATED STEEL, RIVET NUT	3
11	5601D13	1/4-20x1/2 SERR HEAD - STAINLESS	3
12	5601D4	1/4-20 x 3/4 HHCS-SS	5
13	5603D1	NUT #10-24, NYLOCK, SS	2
14	5603D2	1/4/20 NYLOCK NUT, SS	7
15	5619D1	SCR, HEX SOC BUT, HD CPCW, 1	3
16	5635D4	BOLT, CARRIAGE, 1/4-20 UNC	2
17	5636D1	SCREW, #10-24 X .50, PH, PD, SS	3
18	5640D1	1/4-20 x 1/2 PHIL PAN HEAD SCREW	2
19	5647D2	RIVET, 1/8 SS POP RIVET 1/16	12
20	5647D3	RIVET, 1/8 x .034 SS POP RIVET	6
21	5664D3	WING NUT, 3/8-16, 18-8 SS	1
22	8057-10	MOTOR GASKET, MINI VAC	1
23	8061-720-8	3" HOSE CLAMP, STAINLESS STEEL	1
24	8061-720EM	TANGENTIAL BYPASS MOTOR, 120VAC	1
25	8081	CABLE TIE MOUNT	3
26	8084	CABLE TIE	5
27	8153-1	LATCH, CLEANOUT DOOR	4
28	8158	DOOR GASKET	1
29	8176	DECAL, LINE-NEUTRAL-GROUND	1
30	8183	DECAL, "DISCONNECT POWER"	1
31	8423-2	DECAL, DOME VACUUM	1
32	8505-8	SWITCH COVER, MINI VAC	1
33	8615-10W	CLEANOUT DOOR WELDMENT, MINI VAC	1
34	8732	NAMEPLATE, PRODUCT SPEC DECAL	1
35	8753	DECAL, WARNING, TRI-LING	1
36	8754	DECAL, WARNING	1
37	9202-50-10W	DOME WELDMENT, MINI VAC	1

F	8948	ADDED 9202-50-44BAG	12/1/22	BJL
E	8588	REPLACE 2081 WITH 2086	04/22/20	JRF
D	8559	ADD BOX FOR PACKAGING	02/20/20	JRF
C	8549	REMOVE 9202-50-44BAG AS NO LONGER NEEDED	01/31/20	JRF
REV	NO.	DESCRIPTION	DATE	BY

TITLE		COMMERCIAL MINI-VAC, SINGLE MOTOR	
UNSPECIFIED TOLERANCES 1 PL ±.030 2 PL ±.020 3 PL ±.003 ANGLE ±1°	MATERIAL		CEDAR RAPIDS, IOWA
	DRAWN BY		JOHN F
	DATE		3/30/2017
	SCALE	SHEET	PART NO.
	.12	1 / 2	9299-C
			F


THIS DOCUMENT SHALL NOT BE REPRODUCED NOR SHALL THE INFORMATION THEREIN BE USED BY OR DISCLOSED TO OTHERS EXCEPT AS AUTHORIZED BY J.E. ADAMS INDUSTRIES





REV	NO.	DESCRIPTION	DATE	BY
-----	-----	-------------	------	----

THIS DOCUMENT SHALL NOT BE REPRODUCED NOR SHALL THE INFORMATION THEREIN BE USED BY OR DISCLOSED TO OTHERS EXCEPT AS AUTHORIZED BY J.E. ADAMS INDUSTRIES

TITLE COMMERCIAL MINI-VAC, SINGLE MOTOR				
UNSPECIFIED TOLERANCES		MATERIAL		 CEDAR RAPIDS, IOWA
1 PL	± .030	DRAWN BY	JOHN F	
2 PL	± .020	DATE	3/30/2017	
3 PL	± .003	SCALE	.12	
ANGLE ± 1°		SHEET	2 / 2	PART NO. 9299-C
				REV. F

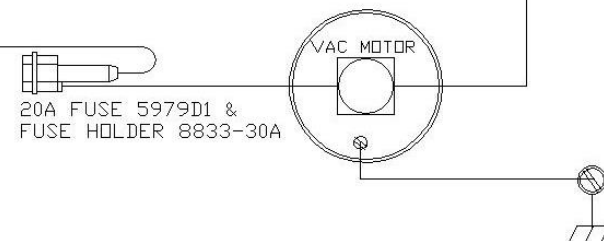
PART NO. 1 MOTOR SERIES

THIS DOCUMENT SHALL NOT BE REPRODUCED NOR SHALL THE INFORMATION THEREIN BE USED BY OR DISCLOSED TO OTHERS EXCEPT AS AUTHORIZED BY J.E. ADAMS INDUSTRIES

BILL OF MATERIAL

ITEM NO.	PART NO.	DESCRIPTION	QTY.
----------	----------	-------------	------

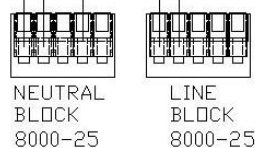
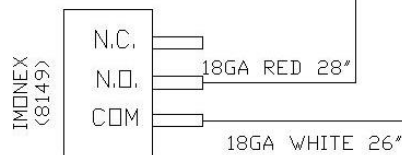
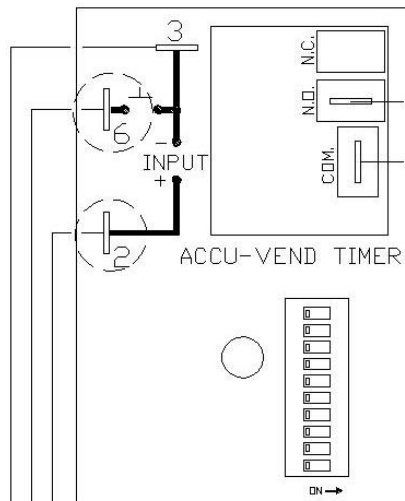
FACTORY LEAD



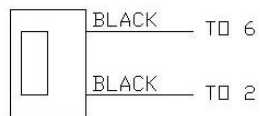
● WIRE NUT



!! IMPORTANT !!
FIELD WIRING MUST COMPLY WITH LOCAL AND NATIONAL ELECTRICAL CODES
20AMP SERVICE IS REQUIRED

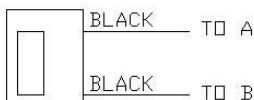


OPTIONAL COIN COUNTER



120VAC, PART # 8641-1

OPTIONAL CYCLE COUNTER



120VAC, PART # 8641

TITLE 9299_1 MTR_SSAC_8149 IMONEX

UNSPECIFIED TOLERANCES FRACT. $\pm 1/32$ 2 PL ± 0.020 3 PL ± 0.010 ANGLE $\pm 1.0^\circ$	SCALE	—	 CEDAR RAPIDS, IOWA
	DRAWN BY	JF	
	DATE	5-18-2017	
	REL. FOR PROD.		
PART NO. 1 MOTOR SERIES	REV. —		

—	8109	RELEASED	12/11/17	JRF
REV	NO.	DESCRIPTION	DATE	BY

PART NO. 1 MOTOR MINI-VAC, ON-OFF TOGGLE		THIS DOCUMENT SHALL NOT BE REPRODUCED NOR SHALL THE INFORMATION THEREIN BE USED BY OR DISCLOSED TO OTHERS EXCEPT AS AUTHORIZED BY J.E. ADAMS INDUSTRIES			BILL OF MATERIAL			
		ITEM NO.	PART NO.	DESCRIPTION	QTY.			

!! IMPORTANT !!

TERMINAL STRIP IS ON BACK SIDE OF TIMER PLATE IN LOCK BOX

FIELD WIRING MUST COMPLY WITH LOCAL AND NATIONAL ELECTRICAL CODES

20AMP SERVICE IS REQUIRED

TITLE 1 MOTOR MINI-VAC, ON-OFF TOGGLE				
UNSPECIFIED TOLERANCES		SCALE		CEDAR RAPIDS, IOWA
FRACT. $\pm 1/32$		DRAWN BY JRF		
2 PL $\pm .020$		DATE 06/08/17		
3 PL $\pm .010$		REL. FOR PROD.		PART NO. 1 MOTOR MINI-VAC, ON-OFF TOGGLE
ANGLE $\pm 1.0^\circ$				REV. —

—	8109	RELEASED	12/11/17	JRF
REV	NO.	DESCRIPTION	DATE	BY